

ITEM NO.	QTY.	PART NO.	TITLE	ITEM NO.	QTY.	PART NO.	TITLE
1	1	8071	TEE - 1/4P	64	6	315053	SLEEVE - WT STORAGE-10LB
2	1	8072	STEM TEE - 1/4P	65	6	315055	SLEEVE - WT STORAGE-45LB
3	4	9002	PIN SPRING - 3/16 X 7/8	66	2	315065	COVER - TOP-FW
4	10	9078	SCREW - SCSHCS 3/8-16 X 3/4 ZP	67	10	315069	HOLDER - PEDAL
5	10	9108	SCREW - SHCS 1/4-20 X 1 ZP	68	4	315075	CAP - FOOT ADJ-L
6	12	9121	SCREW - SBHCS 5/16-18 X 1/2 ZP	69	4	315076	CAP - FOOT ADJ-R
7	2	9135	SCREW - SBHCS 5/16-18 X 3/4 ZP	70	4	315402	PAD - FOOT-FW
8	6	9157	SCREW - HHCS 1/4-20 X 1 GR5 ZP	71	4	315413	SPRING - EXT-FOOT PEDAL
9	2	9165	SCREW - SHCS 5/16-18 X 1/2 ZP	72	2	315600	PLAC - ENG-RACK-POWER
10	2	9176	SCREW - HHCS 5/16-18 X 1 ZP	73	2	315611	DECAL-POSITION & LOCK-FW
11	52	9200	SCREW - HHCS 3/8-16 X 3/4 ZP	74	1	315612	DECAL-WEIGHT STORAGE
12	6	9242	NUT - HEJN 1/4-20 ZP	75	4	315618	DECAL - FOOT ADJ-PLUS
13	2	9254	SCREW - HHMS #10-24 X 1-1/4 ZP	76	4	315619	DECAL - FOOT ADJ-MINUS
14	6	9285	SCREW - CRPHTS-TF 10-24 X 3/4 ZP	77	6	545055	ANCHOR - CABLE PL
15	12	9291	SCREW - CRPHTS-TAB 8 X 1/2 ZP	78	1	600881	DISPLAY BOX - 5 WIN
16	8	9298	SCREW - SCSHCS 10-24 X 3/4 ZP	79	2	600882	DISPLAY BOX - 2 WIN
17	52	9355	WASHER - FW-ACFT-3/8 ZP	80	2	605056	DISPLAY BOX - BACK
18	4	9389	WASHER - ITLW 5/16 ZP	81	2	605428	GROUND CLAMP - DISPLAY
19	12	9394	NUT - HAN 5/16-18	82	1	954212	ROPE - 5MM-POLYESTER
20	1	105443	DECAL - SERIAL NUMBER	83	1	955300	STRIP - PROTECTOR-4 INCH
21	24	115402	PLUG - HOLE-3/8 DIA	84	1	962016	CON - MOD-COUPLER-6-6
22	1	115429	PLASTIC TIE - 10" RED	85	3	990812	KEY - DATA-CS
23	2	295604	PLAC - ENG-LOW DISP	86	1	990828	DISPLAY BOX - TOP
24	12	305062	BUSHING - 026067029	87	1	995418	BAG - 4 X 6 X 4MIL-ZIP LOCK
25	8	305065	PULLEY - 2.500 DIA-MOLDED	88	1	995602	DECAL - KEISER LOGO-2" RED
26	1	310800	L POWER MODULE	89	2	995615	PLACARD - ENG-POWER-BLK
27	1	310801	R POWER MODULE	90	2	995616	PLACARD - ENG-KEY-RED

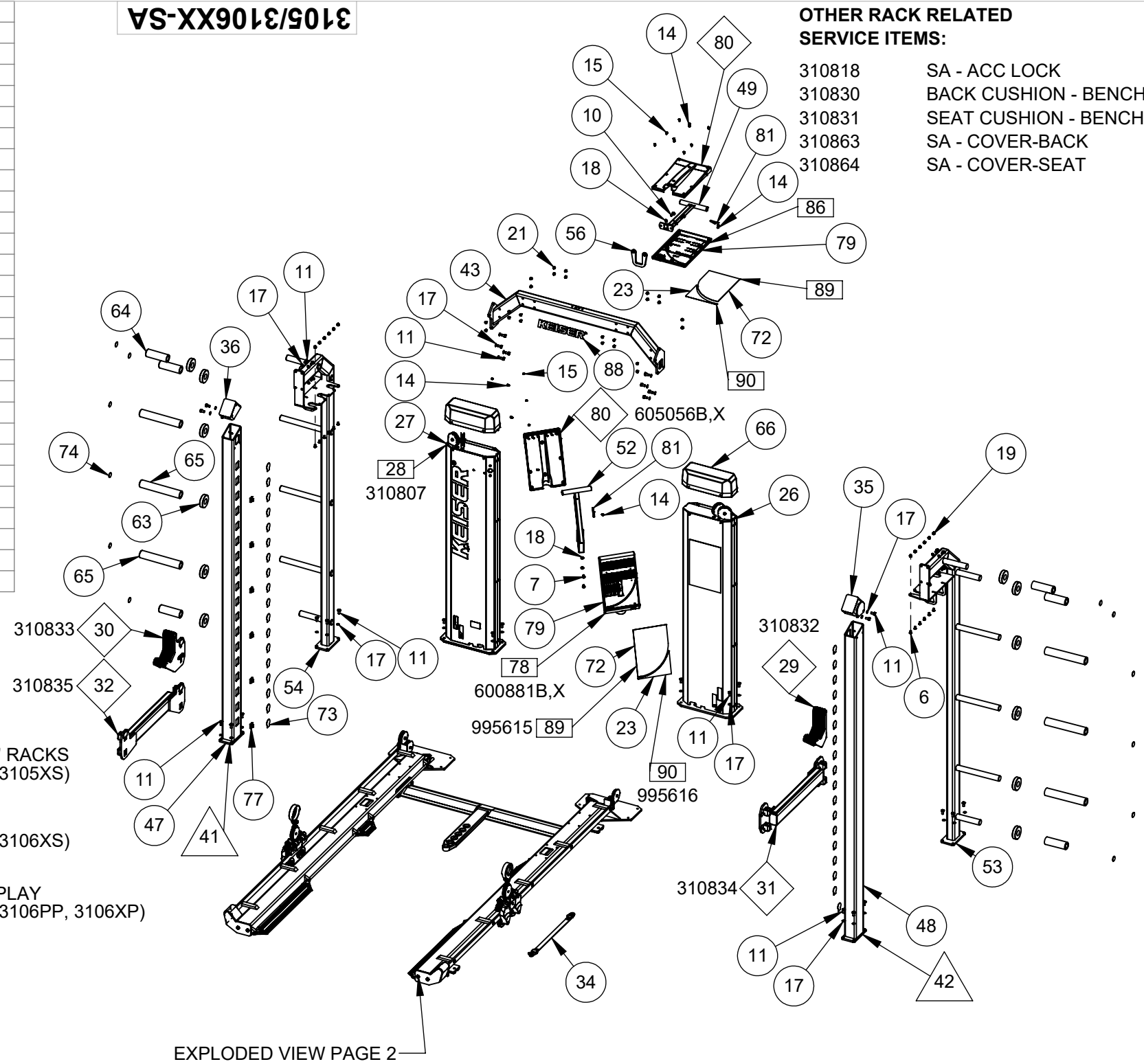
28	1	310807	R POWER MODULE-PWR
29	1	310832	BAR CATCH - L-FW
30	1	310833	BAR CATCH - R-FW
31	1	310834	SPOTTING BAR - CANT-L
32	1	310835	SPOTTING BAR - CANT-R
33	2	310843	PULLEY CARRIAGE
34	1	310849	EXT STRAP-SET
35	1	310907	WELDT - L MITER CAP-FW
36	1	310908	WELDT - R MITER CAP-FW
37	1	310917	WELDT - L BOT FRAME-FW 05 LONG
38	1	310918	WELDT - R BOT FRAME-FW 05 LONG
39	1	310919	WELDT - L PULLEY RAIL-FW 05 LONG
40	1	310920	WELDT - R PULLEY RAIL-FW 05 LONG
41	1	310921	WELDT - R POST-9
42	1	310922	WELDT - L POST-9
43	1	310927	WELDT - CROSS BRACE W DIS-FW
44	1	310943	BOT CROSS FRAME - FW
45	1	310944	WELDT - L PULLEY COVER-FW
46	1	310945	WELDT - R PULLEY COVER-FW
47	1	310960	WELDT - R POST-8
48	1	310961	WELDT - L POST-8
49	1	310965	WELDT - DISPLAY MT-UPPER-FW
50	1	310977	PIVOT LINK - R
51	1	310978	PIVOT LINK - L
52	1	311002	DISPLAY MT
53	1	311015	BUMPER PLATE STORAGE - L
54	1	311016	BUMPER PLATE STORAGE - R
55	2	311821	PLATE - LINK
56	1	311877	PLATE - HOOK-SUSP TRAINER
57	1	312070	TRAY - ROUTING
58	4	315001	HOUSING - PULLEY-BARBELL
59	2	315002	HOUSING - AIR ATTACH-BARBELL
60	2	315003	KNOB - ROPE-HOUSING
61	2	315025	FOOT ADJ - EXTR-21.530
62	2	315026	FOOT ADJ - EXTR-3.250
63	12	315050	COLLAR - WT STORAGE-FW

- # PARTS USED IN COMMON ASSEMBLY AND 8' RACKS (MODELS: 3105BP, 3105PP, 3105PS, 3105XP, 3105XS)
- # PARTS USED FOR 9' RACKS (MODELS: 3106BP, 3106PP, 3106PS, 3106XP, 3106XS)
- # PARTS USED FOR RACKS WITH POWER DISPLAY (MODELS: 3105BP, 3105PP, 3105XP, 3106BP, 3106PP, 3106XP)
- # COMMONLY SERVICED COMPONENTS
- # PARTS ASSOCIATED WITH A SERVICE ASSEMBLY

**NOTE:**

- (1) THIS DRAWING COVERS: 3105BP, 3105PP, 3105PS, 3105XP, 3105XS, 3106BP, 3106PP, 3106PS, 3106XP, 3106XS
- (2) FOLLOW ALL TOP LEVEL PROCEDURES

**3105/3106XX-SA**



EXPLODED VIEW PAGE 2

**OTHER RACK RELATED SERVICE ITEMS:**

- 310818 SA - ACC LOCK
- 310830 BACK CUSHION - BENCH
- 310831 SEAT CUSHION - BENCH
- 310863 SA - COVER-BACK
- 310864 SA - COVER-SEAT

DIMENSIONS ARE IN INCHES  
DIMENSIONS IN [ ] ARE MILLIMETERS  
BREAK SHARP EDGES .005-.015 [ .10-.40 ]  
MACHINED SURFACE FINISH IS  
63 MICROINCHES [ 1.6 MICROMETERS ]  
DO NOT SCALE DRAWING

DRAWN BY: JPR DATE DRAWN: 5/24/21 CHECKED BY: LC DATE CHECKED: 6/4/21

MATERIAL: RAW MAT:

TITLE: **8' & 9' HALF RACK - LONG BASE-SA**

SHEET 1 OF 2 SCALE: 1:30 DRAWING SIZE: B PART#: 3105/3106XX-SA

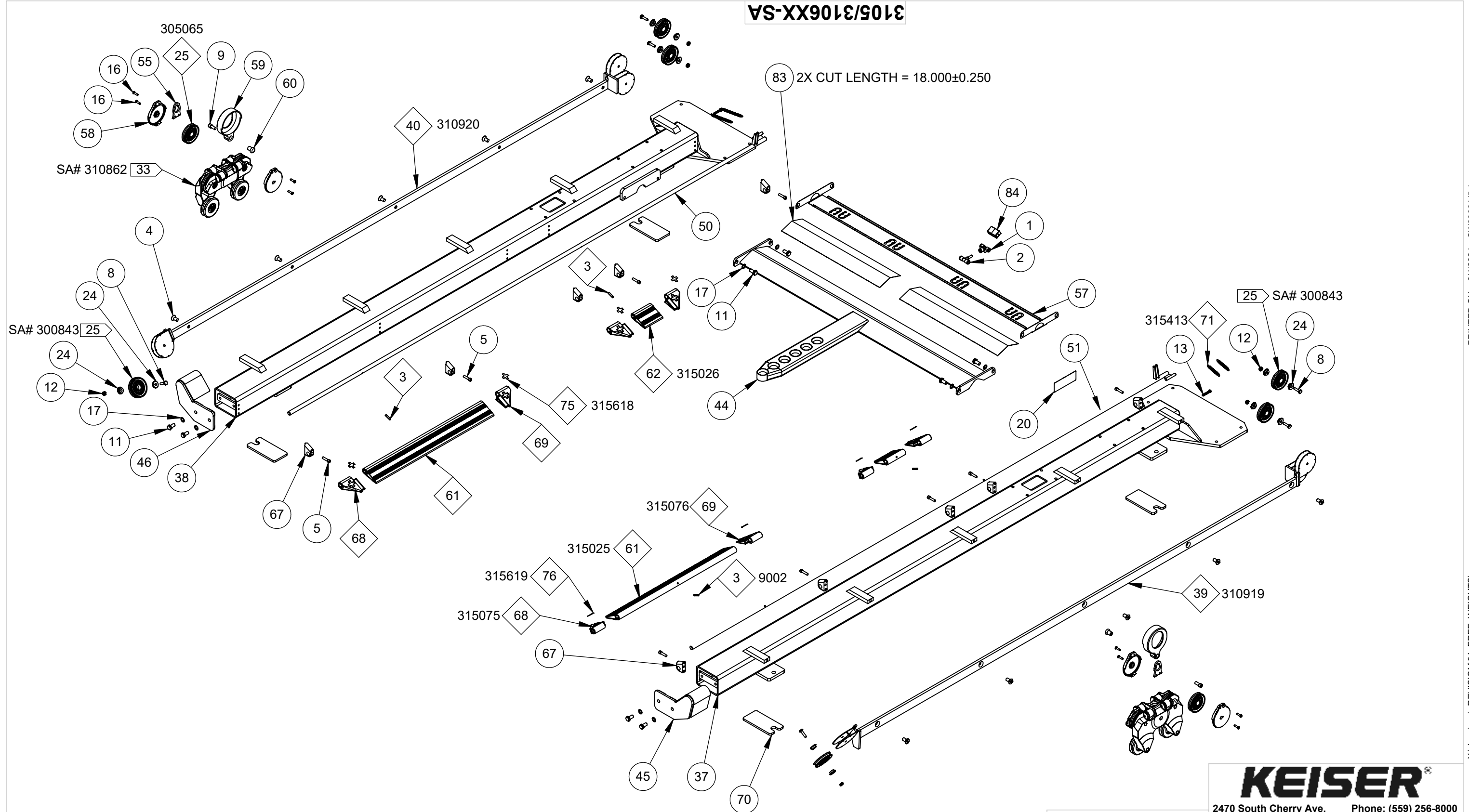
REV	ECO	REVISION DESCRIPTION	BY	CKD	DATE
A	3907	REFERENCE PRODUCTION DRAWING REV I	JPR	LC	6/4/21

**KEISER**

2470 South Cherry Ave. Phone: (559) 256-8000  
Fresno, CA, USA 93706-5004 Fax: (559) 256-8100

THE INFORMATION DISCLOSED HEREIN WAS ORIGINATED BY AND IS THE PROPERTY OF KEISER CORP. AND ALL PATENT, PROPRIETARY, DESIGN, USE, SALE, MANUFACTURING, AND REPRODUCTION RIGHTS THERETO ARE RESERVED BY KEISER CORP.

**3105/3106XX-SA**



83 2X CUT LENGTH = 18.000±0.250

SA# 310862 33

SA# 300843 25

25 SA# 300843

39 310919

**KEISER®**

2470 South Cherry Ave. Phone: (559) 256-8000  
 Fresno, CA, USA 93706-5004 Fax: (559) 256-8100

THE INFORMATION DISCLOSED HEREIN WAS ORIGINATED BY AND IS THE PROPERTY OF KEISER CORP. AND ALL PATENT, PROPRIETARY, DESIGN, USE, SALE, MANUFACTURING, AND REPRODUCTION RIGHTS THERETO ARE RESERVED BY KEISER CORP.

DIMENSIONS ARE IN INCHES  
 DIMENSIONS IN [ ] ARE MILLIMETERS  
 BREAK SHARP EDGES .005-.015 [.10-.40]  
 MACHINED SURFACE FINISH IS  
 63 MICROINCHES [1.6 MICROMETERS]  
 DO NOT SCALE DRAWING

DRAWN BY: JPR	DATE DRAWN: 5/24/21	CHECKED BY: LC	DATE CHECKED: 6/4/21
---------------	---------------------	----------------	----------------------

MATERIAL: RAW MAT:

REV	ECO	REVISION DESCRIPTION	BY	CKD	DATE
A	3907	REFERENCE PRODUCTION DRAWING REV I	JPR	LC	6/4/21

TITLE: **8' & 9' HALF RACK - LONG BASE-SA**  
 SHEET **2** OF **2** SCALE: **1:12** DRAWING SIZE: **B** PART#: **3105/3106XX-SA**

PRINTED ON: 6/4/2021 SW2006 V5.1

X:\drawings\REVISION\31\_FREE\_WEIGHTS\