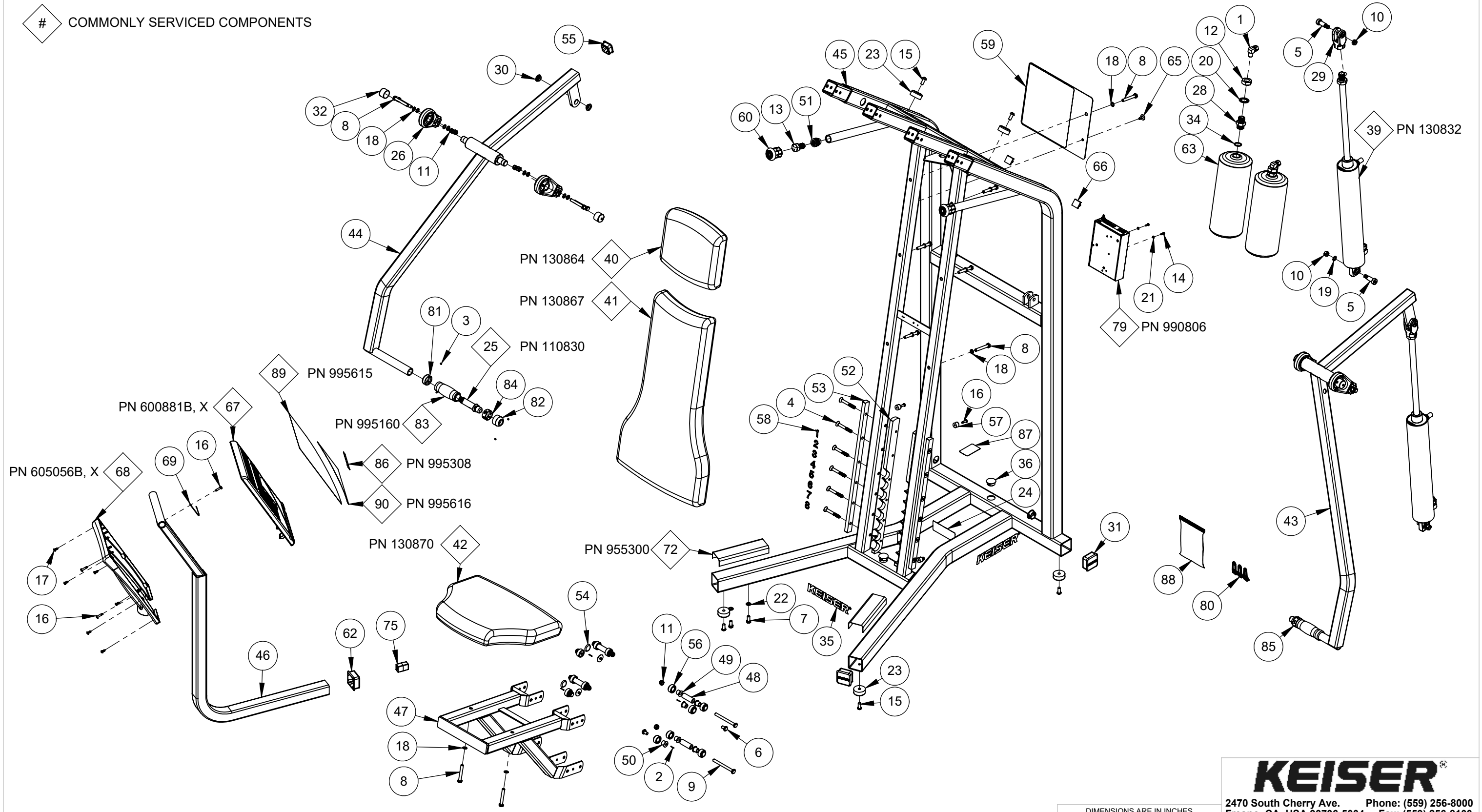


COMMONLY SERVICED COMPONENTS



NOTE:

1338XP-SA COVERS THE FOLLOWING MODELS: 1338BP, AND 1338XP.

DIMENSIONS ARE IN INCHES
DIMENSIONS IN [] ARE MILLIMETERS
BREAK SHARP EDGES .005-.015 [.10-.40]
MACHINED SURFACE FINISH IS
63 MICROINCHES [1.6 MICROMETERS]
DO NOT SCALE DRAWING

KEISER®
2470 South Cherry Ave. Phone: (559) 256-8000
Fresno, CA, USA 93706-5004 Fax: (559) 256-8100
THE INFORMATION DISCLOSED HEREIN WAS ORIGINATED BY
AND IS THE PROPERTY OF KEISER CORP. AND ALL PATENT,
PROPRIETARY, DESIGN, USE, SALE, MANUFACTURING, AND
REPRODUCTION RIGHTS THERETO ARE RESERVED BY KEISER
CORP.

DRAWN BY:	BJU	DATE DRAWN:	11/09/20	CHECKED BY:	LC	DATE CHECKED:	3/24/21
MATERIAL:	RAW MAT:						
TITLE:							A300 CHEST PRESS - PWR-SA
SHEET	1 OF 2	SCALE:	1:12	DRAWING SIZE:	B	PART#:	1338XP-SA

REV	ECO	REVISION DESCRIPTION	BY	CKD	DATE
A	3807	RFP	BJU	LC	3/24/21

ITEM NO.	QTY.	PART NO.	TITLE	ITEM NO.	QTY.	PART NO.	TITLE
1	2	8153	CAF - ME-3/8 C X 1/4 M	64	3	265310	Y CONNECTOR - 1/8 DIA-PL
2	4	9009	PIN SPRING 0063 X 0500 ZP	65	1	265404	PLASTIC RIVET
3	8	9014	SCREW - HSSS 8-32 X 1/8 SS	66	2	545055	ANCHOR - CABLE PL
4	12	9079	SCREW - SFCHCS 5/16-18 X2 1/2	67	1	600881X	DISPLAY BOX - 5 WIN
5	4	9127	SCREW - SHSS 1/2 X 1 ZP	68	1	605056	DISPLAY BOX - BACK
6	4	9174	SCREW - HHCS 5/16-18 X 1/2	69	1	605428	GROUND CLAMP - DISPLAY
7	2	9175	SCREW - HHCS 5/16-18 X 3/4 ZP	70	1	953101	TUBING - .375 OD X .062 W-PE BLK
8	16	9179	SCREW - HHCS 5/16-18 X 2-1/4 ZP	71	1	953108	TUBING - 1/4 URETHANE BLK
9	4	9183	SCREW - HHCS 5/16-18 X 3-1/2 ZP	72	1	955300	STRIP - PROTECTOR-4 INCH
10	4	9218	NUT - HRLN 3/8-16 SS	73	2	962004	CON - 2MM-2-S
11	12	9226	NUT - HELN 5/16-18 ZP	74	6	962005	CON - MOD-P-4P-4C
12	2	9231	NUT - HJN 3/4-10 ZP	75	1	962016	CON - MOD-COUPLER-6-6
13	2	9250	SCREW - HHCS 5/8-18 X 1 1/4 ZP	76	4	962017	CON - MOD-P-6P-6C
14	2	9272	SCREW - CRPHTS-TF #6-32 X 1/2 SS	77	1	966701	WIRE - CABLE-4-26 GA
15	6	9279	SCREW - SBHTS-TF 5/16-18 X 3/4 ZP	78	1	966702	WIRE - CABLE-6-26GA
16	7	9285	SCREW - CRPHTS 10-24 X 3/4 ZP	79	1	990806	ASSY - PROCESSOR BOX
17	6	9291	SCREW - CRPHTS 8 X 1/2 ZP	80	3	990812	KEY - DATA-CS
18	24	9353	WASHER - ACFT-5/16 ZP	81	2	995000	COLLAR - GRIP
19	2	9355	WASHER - FW-ACFT-3/8 SS	82	2	995001	CAP - GRIP W HOLE
20	2	9364	WASHER - ITLW 3/4 ZP	83	2	995160	GRIP - MOLDED
21	2	9366	WASHER - ITLW #6 ZP	84	1	995300	DECAL - TB-PLUS
22	2	9389	WASHER - ITLW 5/16 ZP	85	1	995301	DECAL - TB-MINUS
23	6	105423	BUMPER - MOLDED GLIDE	86	1	995308	DECAL - ENG-SEAT-POWER
24	1	105443	DECAL - SERIAL NUMBER	87	1	995324	DECAL - MADE IN THE USA
25	2	110830	ASSY - TB VALVE-DIG	88	1	995418	BAG - 4 X 6 X 4MIL-ZIP LOCK
26	4	110894	BEARING ASSY	89	1	995615	PLACARD - ENG-POWER-BLK
27	1	110897	ASSY - QD-MALE	90	1	995616	PLACARD - ENG-KEY-RED
28	2	115000	BUSHING - TANK				
29	2	115005	CLEVIS - CYLINDER-2-1/2				
30	4	115051	BEARING - FLANGE-.5 ID				
31	3	115054	PLUG - 2 IN SQ-KEISER				
32	4	115067	CAP - Ø 1 X 3/4				
33	1	115323	FILTER - IN LINE				
34	2	115333	O-RING - .943 X .737 X .103				
35	3	115372	DECAL - KEISER LOGO-1 1/4" RED				
36	3	115404	PLUG - HOLE-1 DIA				
37	20	115423	TIE - 8 IN-PL BLK				
38	1	115429	PLASTIC TIE - 10" RED				
39	2	130832	ASSY - EC-2.5 X 12				
40	1	130864	CUSHION - HEAD-CURVED				
41	1	130867	CUSHION - BACK-CURVED				
42	1	130870	CUSHION - SEAT-CURVED				
43	1	130903	ARM - L				
44	1	130904	ARM - R				
45	1	130926	MAIN FRAME - 1338				
46	1	130933	WELDT - DISPLAY MT				
47	1	130934	WELDT - FRM-SEAT				
48	4	132181	TUBE - ROLLER				
49	8	132200	AXLE				
50	4	132201	AXLE - THREADED				
51	2	132250	ADJ STOP				
52	2	135005	SEAT - RACK				
53	2	135006	SEAT - RAIL				
54	4	135055	BUMPER - STEM				
55	2	135056	CAP - 1.500 SQ-PL				
56	12	135060	ROLLER				
57	3	135076	PLASTIC BUMPER				
58	1	135306	DECAL - SEAT-1-10				
59	1	135418	PLACARD - A300 CHEST PRESS				
60	2	135422	RUBBER CRUTCH TIP - #20 BLK				
61	1	170891	ASSY - MUFFLER-LONG				
62	1	175051	2 SQ. BUSHING				
63	2	255318	TANK - 140 CU IN				



X:\drawings\REVISION13_CHEST_PRESS.PRESS

PRINTED ON: 3/25/2021 SW2006 V5.1

KEISER®

2470 South Cherry Ave. Phone: (559) 256-8000
 Fresno, CA, USA 93706-5004 Fax: (559) 256-8100

THE INFORMATION DISCLOSED HEREIN WAS ORIGINATED BY AND IS THE PROPERTY OF KEISER CORP. AND ALL PATENT, PROPRIETARY, DESIGN, USE, SALE, MANUFACTURING, AND REPRODUCTION RIGHTS THERETO ARE RESERVED BY KEISER CORP.

DIMENSIONS ARE IN INCHES
 DIMENSIONS IN [] ARE MILLIMETERS
 BREAK SHARP EDGES .005-.015 (.10-.40)
 MACHINED SURFACE FINISH IS
 63 MICROINCHES [1.6 MICROMETERS]
 DO NOT SCALE DRAWING

DRAWN BY: BJU	DATE DRAWN: 11/09/20	CHECKED BY: LC	DATE CHECKED: 3/24/21
---------------	----------------------	----------------	-----------------------

MATERIAL:
 RAW MAT:

TITLE: **A300 CHEST PRESS - PWR-SA**

SHEET **2** OF **2** SCALE: **1:12** DRAWING SIZE: **B** PART#: **1338XP-SA**

REV	ECO	RFP	BY	LC	3/24/21	DATE
A	3807	RFP	BJU	LC	3/24/21	
REV	ECO		BY	CKD	DATE	REVISION DESCRIPTION