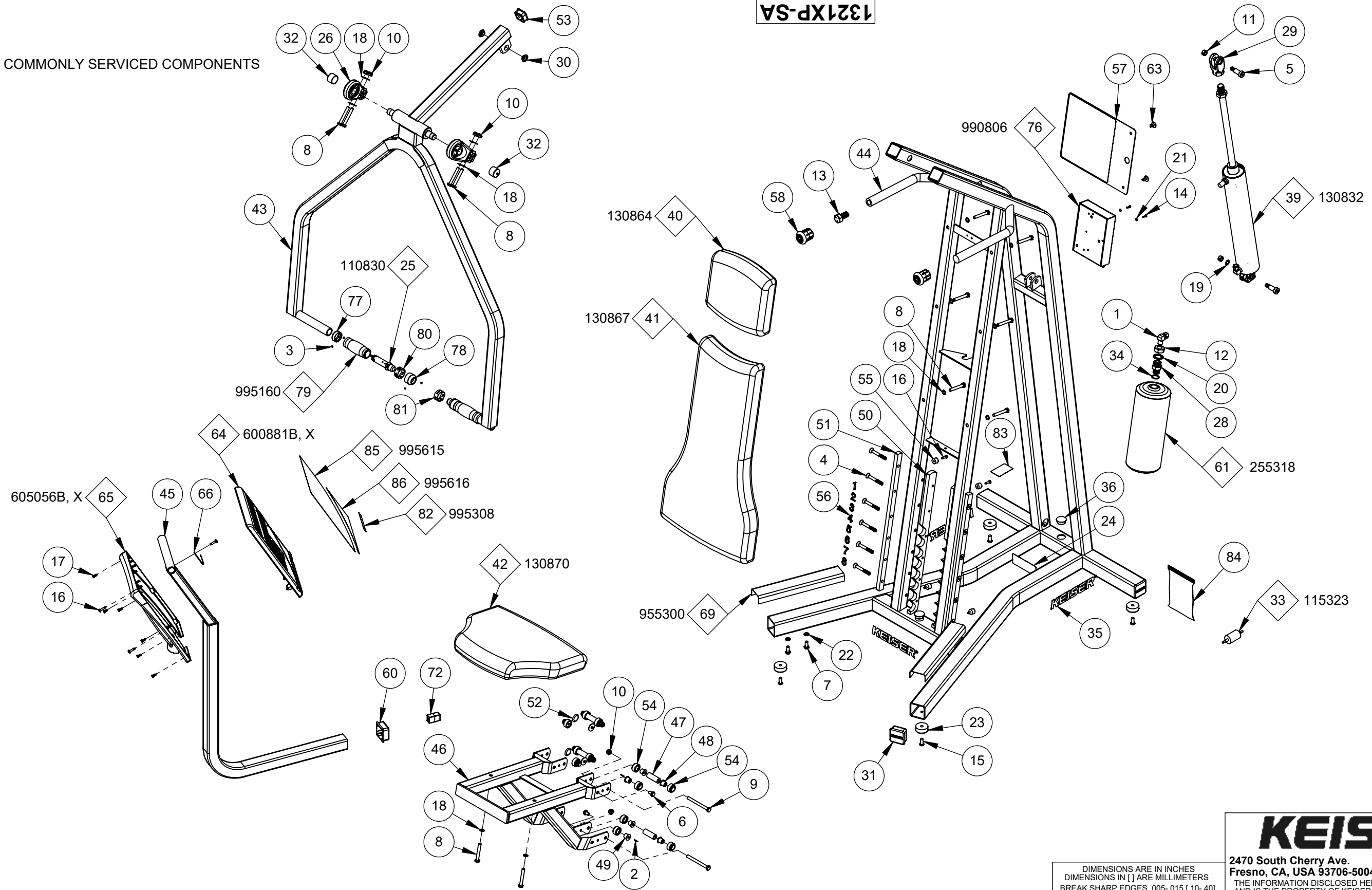


1321XP-SA

COMMONLY SERVICED COMPONENTS



NOTE:

(1) THIS DRAWING COVERS: 1321BP, 1321PP AND 1321SP
 (2) FOLLOW ALL TOP LEVEL PROCEDURES

DIMENSIONS ARE IN INCHES
 DIMENSIONS IN [] ARE MILLIMETERS
 BREAK SHARP EDGES .005-.015 (.10-.40)
 MACHINED SURFACE FINISH IS
 63 MICROINCHES [1.6 MICROMETERS]
 DO NOT SCALE DRAWING

KEISER®
 2470 South Cherry Ave. Phone: (559) 256-8000
 Fresno, CA, USA 93706-5004 Fax: (559) 256-8100
 THE INFORMATION DISCLOSED HEREIN WAS ORIGINATED BY
 AND IS THE PROPERTY OF KEISER CORP. AND ALL PATENT,
 PROPRIETARY, DESIGN, USE, SALE, MANUFACTURING, AND
 REPRODUCTION RIGHTS THERETO ARE RESERVED BY KEISER
 CORP.

DRAWN BY:	LMG	DATE DRAWN:	11/10/21	CHECKED BY:	LC	DATE CHECKED:	12/14/21
MATERIAL:							
RAW MAT:		MASS (Kg):					
TITLE:	A250 SEATED CHEST PRESS - PWR-SA						
SHEET	1	OF	2	SCALE:	1:12	DRAWING SIZE:	B
PART#:	1321XP-SA						

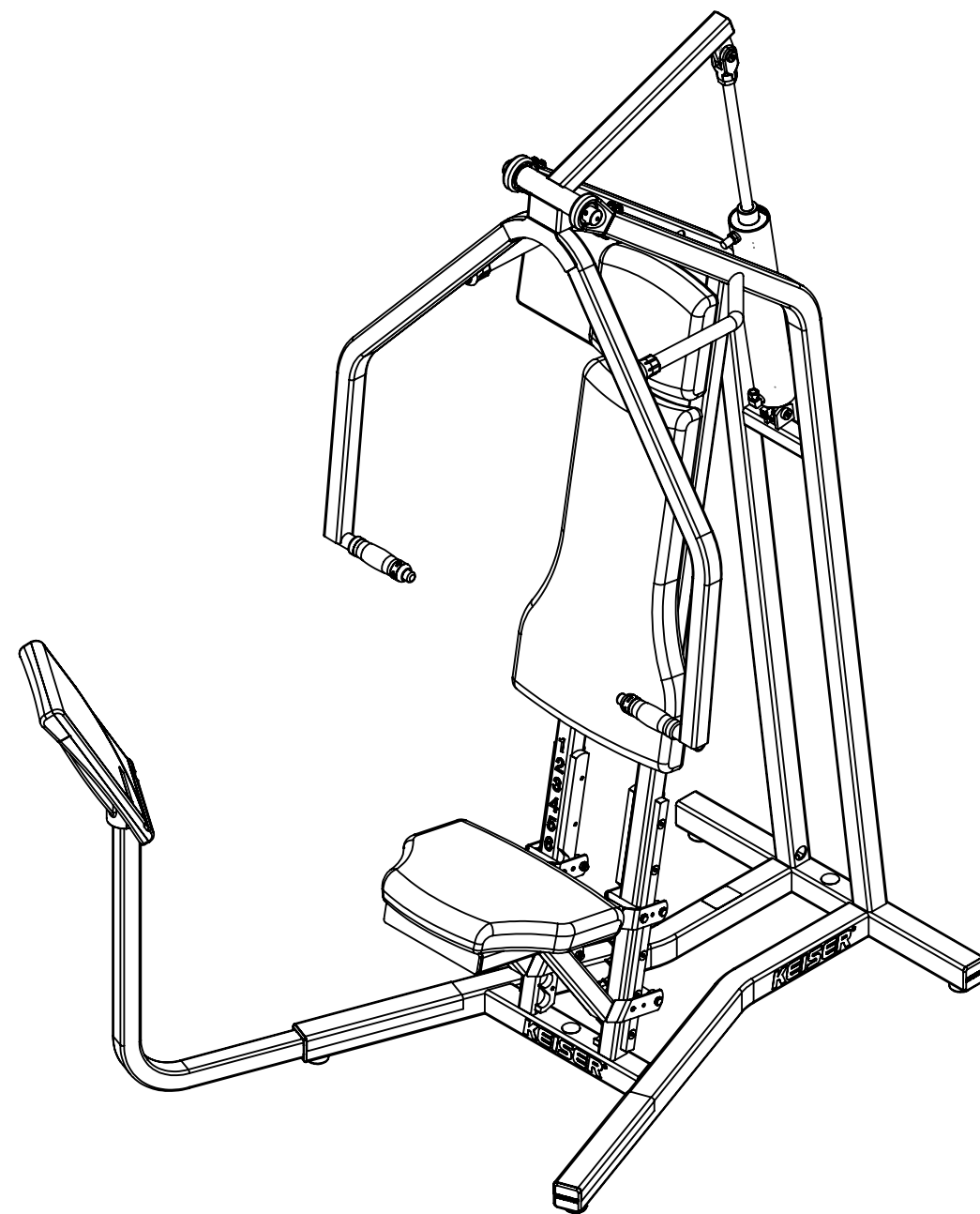
REV	ECO	REVISION DESCRIPTION	BY	CKD	DATE
A	3981	REFERENCE ECO MEMO FOR DETAILS	LMG	LC	12/14/21

PRINTED ON: 12/14/2021 SW2006 V5.1

X:\drawings\REVISION\13_CHEST_PRESS\

ITEM NO.	QTY.	PART NO.	TITLE	ITEM NO.	QTY.	PART NO.	TITLE
1	1	8153	CAF - ME-3/8 C X 1/4 M	64	1	600881	DISPLAY BOX 5 - WIN
2	4	9009	PIN SPRING 0063 X 0500 ZP	65	1	605056	DISPLAY BOX - BACK
3	8	9014	SCREW - HSSS 8-32 X 1/8 SS	66	1	605428	GROUND CLAMP - DISPLAY
4	12	9079	SCREW - SFCHCS 5/16-18 X2 1/2	67	1	953101	TUBING - .375 OD X .062 W-PE BLK
5	2	9127	SCREW - SHSS 1/2 X 1 ZP	68	1	953108	TUBING - 1/4 URETHANE BLK
6	4	9174	SCREW - HHCS 5/16-18 X 1/2 ZP	69	2	955300	STRIP - PROTECTOR-4 INCH
7	2	9175	SCREW - HHCS 5/16-18 X 3/4 ZP	70	2	962004	CON - 2MM-2-S
8	12	9179	SCREW - HHCS 5/16-18 X 2-1/4 ZP	71	4	962005	CON - MOD - P-4P-4C
9	4	9183	SCREW - HHCS 5/16-18 X 3-1/2 ZP	72	1	962016	CON - MOD-COUPLER-6-6
10	8	9226	NUT - HELN 5/16-18 ZP	73	4	962017	CON-MOD-P-6P-6C
11	2	9227	NUT - HRLN 3/8-16 ZP	74	1	966701	WIRE - CABLE-4-26 GA
12	1	9231	NUT - HJN 3/4-10 ZP	75	1	966702	WIRE - CABLE-6-26 GA
13	1	9250	SCREW - HHCS 5/8-18 X 1 1/4 ZP	76	1	990806	ASSY - PROCESSOR BOX
14	2	9272	SCREW - CRPHTS-TF #6-32 X 1/2 SS	77	2	995000	COLLAR - GRIP
15	4	9279	SCREW - SBHTS-TF 5/16-18 X 3/4 ZP	78	2	995001	CAP - GRIP W HOLE
16	7	9285	SCREW - CRPHTS 10-24 X 3/4 ZP	79	2	995160	GRIP - MOLDED
17	6	9291	SCREW - CRPHTS 8 X 1/2 ZP	80	1	995300	DECAL - TB-PLUS
18	16	9353	WASHER - THIN-ACFT 0313 SS	81	1	995301	DECAL - TB-MINUS
19	1	9355	WASHER - FW-ACFT-3/8 SS	82	1	995308	DECAL - SEAT-POWER
20	1	9364	WASHER - ITLW 3/4 ZP	83	1	995324	DECAL - MADE IN THE USA
21	2	9366	WASHER - ITLW #6 ZP	84	1	995418	BAG - 4 X 6 X 4MIL-ZIP LOCK
22	2	9389	WASHER - ITLW 5/16 ZP	85	1	995615	PLACARD - ENG-POWER-BLK
23	4	105423	BUMPER - MOLDED GLIDE	86	1	995616	PLACARD - ENG-KEY-RED
24	1	105443	DECAL - SERIAL NUMBER				
25	2	110830	ASSY - TB VALVE-DIG				
26	2	110894	BEARING ASSY				
27	1	110897	ASSY - QD-MALE				
28	1	115000	BUSHING - TANK				
29	1	115005	CLEVIS - CYLINDER-2-1/2				
30	2	115051	BEARING - FLANGE-.5 ID				
31	3	115054	PLUG - 2 IN SQ-KEISER				
32	2	115067	CAP - Ø1 X 3/4				
33	1	115323	FILTER - IN LINE				
34	1	115333	O-RING - .943 X .737 X .103				
35	3	115372	DECAL - KEISER LOGO-1 1/4" RED				
36	2	115404	PLUG - HOLE-1 DIA				
37	7	115423	TIE - 8 IN-PL BLK				
38	1	115429	PLASTIC TIE - 10" RED				
39	1	130832	ASSY - EC-2.5 X 12				
40	1	130864	CUSHION - HEAD-CURVED				
41	1	130867	CUSHION - BACK-CURVED				
42	1	130870	CUSHION - SEAT-CURVED				
43	1	130900	EX ARM				
44	1	130902	MAIN FRM				
45	1	130933	WELDT - DISPLAY MT				
46	1	130934	WELDT - FRM-SEAT				
47	4	132181	TUBE - ROLLER				
48	8	132200	AXLE				
49	4	132201	AXLE - THREADED				
50	2	135005	SEAT - RACK				
51	2	135006	SEAT - RAIL				
52	4	135055	STEM BUMPER				
53	1	135056	CAP - 1.500 SQ-PL				
54	12	135060	ROLLER				
55	4	135076	PLASTIC BUMPER				
56	1	135306	DECAL - SEAT-1-10				
57	1	135416	PLACARD - A250 SEATED CHEST PRESS				
58	2	135422	RUBBER CRUTCH TIP - #20 BLK				
59	1	170891	ASSY - MUFFLER-LONG				
60	1	175051	2 SQ. BUSHING				
61	1	255318	TANK - 140 CU IN				
62	1	265310	Y CONNECTOR - 1/8 DIA-PL				
63	2	265404	PLASTIC RIVET				

1321XP-SA



X:\drawings\REVISION\13_CHEST_PRESS\ PRINTED ON: 12/14/2021 SW2006 V5.1

KEISER[®]

2470 South Cherry Ave. Phone: (559) 256-8000
 Fresno, CA, USA 93706-5004 Fax: (559) 256-8100

THE INFORMATION DISCLOSED HEREIN WAS ORIGINATED BY AND IS THE PROPERTY OF KEISER CORP. AND ALL PATENT, PROPRIETARY, DESIGN, USE, SALE, MANUFACTURING, AND REPRODUCTION RIGHTS THERETO ARE RESERVED BY KEISER CORP.

DIMENSIONS ARE IN INCHES
 DIMENSIONS IN [] ARE MILLIMETERS
 BREAK SHARP EDGES .005-.015 [.10-.40]
 MACHINED SURFACE FINISH IS
 63 MICROINCHES [1.6 MICROMETERS]
 DO NOT SCALE DRAWING

DRAWN BY: LMG	DATE DRAWN: 11/10/21	CHECKED BY: LC	DATE CHECKED: 12/14/21
---------------	----------------------	----------------	------------------------

MATERIAL:
 RAW MAT: MASS (Kg):

REV	ECO	REFERENCE ECO MEMO FOR DETAILS	LMG	LC	12/14/21
		REVISION DESCRIPTION	BY	CKD	DATE

TITLE: **A250 SEATED CHEST PRESS - PWR-SA**
 SHEET **2** OF **2** SCALE: **1:12** DRAWING SIZE: **B** PART#: **1321XP-SA**