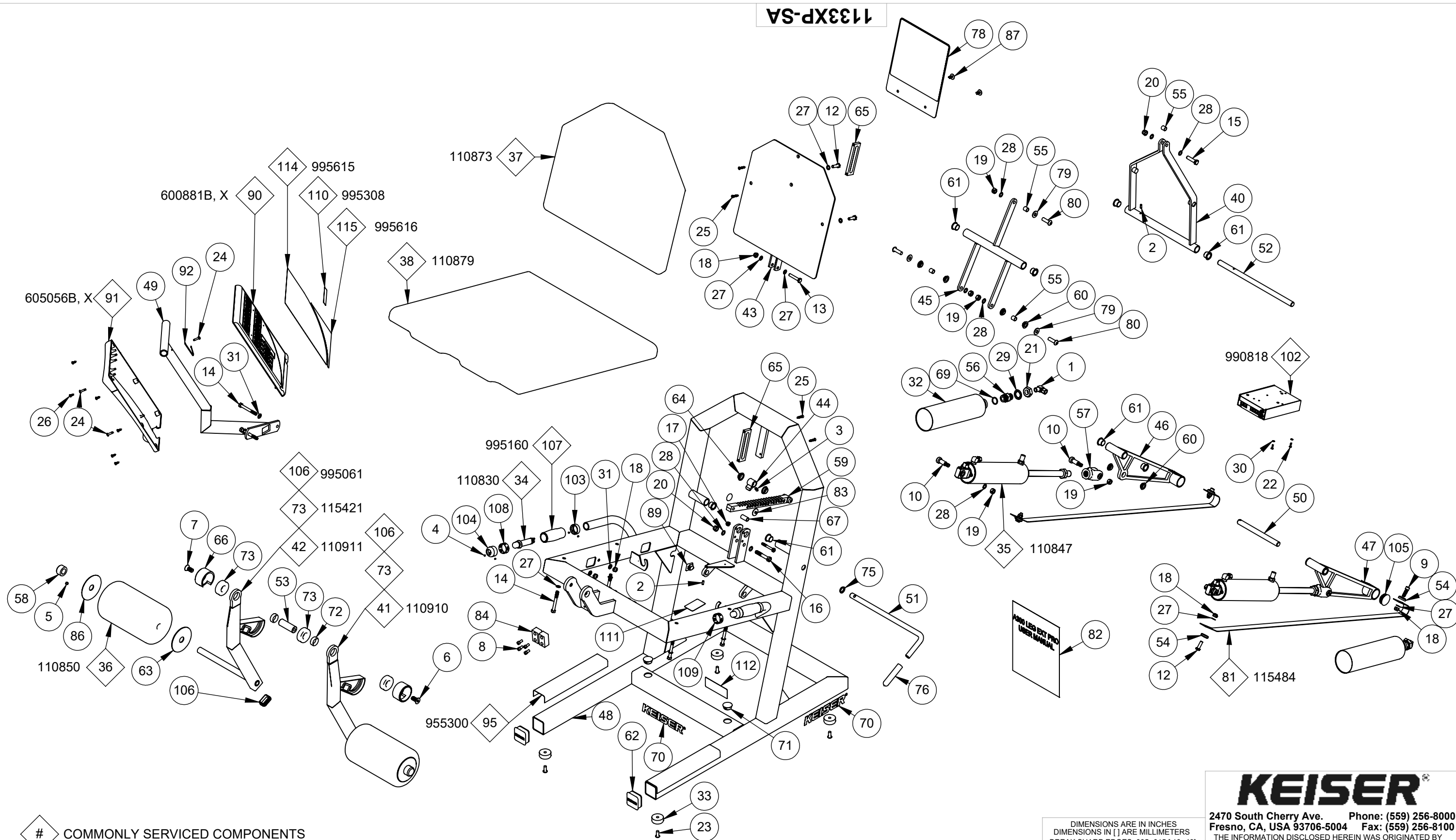


1133XP-SA



# COMMONLY SERVICED COMPONENTS

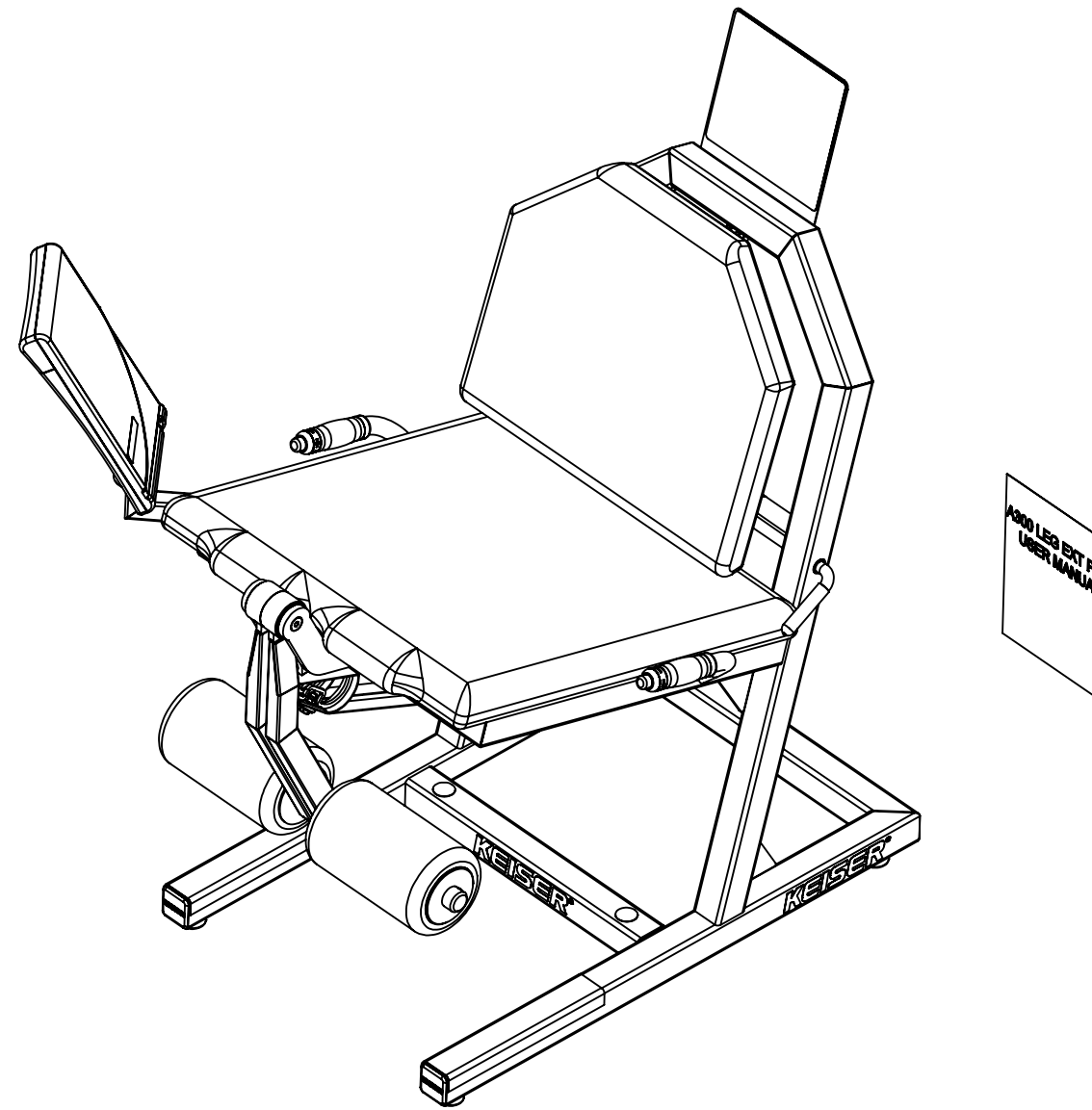
NOTE:  
 (1) THIS DRAWING COVERS: 1133BP AND 1133XP  
 (2) FOLLOW ALL TOP LEVEL PROCEDURES

DIMENSIONS ARE IN INCHES DIMENSIONS IN [ ] ARE MILLIMETERS BREAK SHARP EDGES .005-.015 [ .10-.40 ] MACHINED SURFACE FINISH IS 63 MICROINCHES [ 1.6 MICROMETERS ] DO NOT SCALE DRAWING			<b>KEISER</b> 2470 South Cherry Ave. Phone: (559) 256-8000 Fresno, CA, USA 93706-5004 Fax: (559) 256-8100 THE INFORMATION DISCLOSED HEREIN WAS ORIGINATED BY AND IS THE PROPERTY OF KEISER CORP. AND ALL PATENT, PROPRIETARY, DESIGN, USE, SALE, MANUFACTURING, AND REPRODUCTION RIGHTS THERETO ARE RESERVED BY KEISER CORP.				
DRAWN BY:	BJU	DATE DRAWN:	11/24/20	CHECKED BY:	LC	DATE CHECKED:	1/13/21
MATERIAL:	RAW MAT:						
B	3976	REFERENCE ECO MEMO FOR DETAILS	BJU	LC	11/4/21	TITLE: <b>A300 LEG EXT PRO - PWR-SA</b>	
REV	ECO	REVISION DESCRIPTION	BY	CKD	DATE	SHEET 1 OF 2	SCALE: 1:12 DRAWING SIZE: B PART#: 1133XP-SA

X:\drawings\REVISION11\_LEG\_EXTENSION PRINTED ON: 11/4/2021 SW2006 V5.1

ITEM NO.	QTY.	PART NO.	TITLE	ITEM NO.	QTY.	PART NO.	TITLE
1	2	8153	CAF - ME-3/8 C X 1/4 M	64	2	115056	BEARING - FLANGE-.625 ID SHORT
2	2	9001	PIN SPRING - 3/16 X 1/2	65	2	115072	GUIDE / BEARING
3	1	9003	PIN SPRING - 1/4 X 1/2	66	2	115080	COVER - BEARING
4	8	9014	SCREW - HSSS 8-32 X 1/8 SS	67	1	115314	TUBE - SLEEVE
5	2	9026	SCREW - HSSS 5/16-18 X 1/4 ZP	68	1	115323	FILTER - IN LINE
6	1	9076	SCREW - SFCHCS 04375-14 X 1 ZP	69	2	115333	O-RING - .943 X .737 X .103
7	1	9077	SCREW - SFCHCS SL 04375-14 X 1 BLK	70	3	115372	DECAL - KEISER LOGO-1 1/4" RED
8	4	9098	SCREW - SHCS 1/4-20 X 1/2 ZP	71	2	115404	PLUG - HOLE-1 DIA
9	2	9101	SCREW - SHCS 5/16-18 X 1 ZP	72	2	115420	NEEDLE BEARING B-146
10	4	9127	SCREW - SHSS 1/2 X 1 ZP	73	3	115421	THRUST BEARING T-88
11	1	9152	SCREW - HHCS 1/4-20 X 2 ZP	74	18	115423	TIE - 8 IN-PL BLK
12	4	9176	SCREW - HHCS 5/16-18 X 1 ZP	75	1	115424	SNAP-IN NYLINER
13	1	9177	SCREW - HHCS 5/16-18 X 1-3/4 ZP	76	1	115427	GRIP - 0500 X 3000
14	6	9181	SCREW - HHCS 5/16-18 X 2 3/4 ZP	77	1	115429	PLASTIC TIE - 10" RED
15	1	9203	SCREW - HHCS 3/8-16 X 1 1/2 ZP	78	1	115448	PLACARD - A300 LEG EXT PRO
16	1	9206	SCREW - HHCS 3/8-16 X 2 1/4 ZP	79	3	115450	WASHER - FW .88 X .39 X .07 NP
17	1	9225	NUT - HELN 1/4-20 ZP	80	3	115451	SCREW - SBHCS 3/8-16 X 1-1/4 NP
18	7	9226	NUT - HELN 5/16-18 ZP	81	2	115484	BELT - LEG EXT PRO
19	7	9227	NUT - HRLN 3/8-16 ZP	82	1	115506	MANUAL - USER - A300 LEG EXT PRO
20	2	9228	NUT - HELN 3/8-16 ZP	83	2	135055	STEM BUMPER
21	2	9231	NUT - HJN 3/4-10 ZP	84	2	165421	STOP - EA-URETHANE
22	2	9272	SCREW - CRPHTS-TF #6-32 X 1/2 SS	85	1	170891	ASSY - MUFFLER-LONG
23	4	9279	SCREW - SBHTS-TF 5/16-18 X 3/4 ZP	86	2	265055	BEVEL WASHER
24	3	9285	SCREW - CRPHTS 10-24 X 3/4 ZP	87	2	265404	PLASTIC RIVET
25	4	9288	SCREW - CRPHTS TF 10-24 X 1 ZP	88	1	320800	VALVE BLOCK
26	6	9291	SCREW - CRPHTS 8 X 1/2 ZP	89	1	545055	ANCHOR - CABLE PL
27	12	9353	WASHER - ACFT-5/16 ZP	90	1	600881X	DISPLAY BOX - 5 WIN
28	9	9355	WASHER - FW-ACFT-3/8 SS	91	1	605056	DISPLAY BOX - BACK
29	2	9364	WASHER - ITLW 3/4 ZP	92	1	605428	GROUND CLAMP - DISPLAY
30	2	9366	WASHER - ITLW #6 ZP	93	1	953101	TUBING - .375 OD X .062 W-PE BLK
31	4	9389	WASHER - ITLW 5/16 ZP	94	1	953108	TUBING - 1/4 URETHANE BLK
32	2	100903	TANK - 72 IN3	95	1	955300	STRIP - PROTECTOR-4 INCH
33	4	105423	BUMPER - MOLDED GLIDE	96	2	962004	CON - 2MM-2-S
34	2	110830	ASSY - TB VALVE-DIG	97	6	962005	CON - MOD - P-4P-4C
35	2	110847	ASSY - EC-2.5 X 7	98	1	962016	CON - MOD-COUPLER-6-6
36	2	110850	ROLLER CUSHION	99	4	962017	CON-MOD-P-6P-6C
37	1	110873	CUSHION - BACK-CURVED	100	1	966701	WIRE - CABLE-4-26 GA
38	1	110879	CUSHION - SEAT-LONG	101	1	966702	WIRE - CABLE-6-26GA
39	1	110897	ASSY - QD-MALE	102	1	990818	PROCESSOR BOX - A250-DBL
40	1	110909	SEAT BACK PIVOT	103	2	995000	COLLAR - GRIP
41	1	110910	EX ARM - L	104	2	995001	CAP - GRIP W HOLE
42	1	110911	EX ARM - R	105	2	995060	PLUG - TUBE-1500 OD
43	1	110912	SEAT BACK	106	2	995061	PLUG - TUBE-1000 X 1500
44	1	110916	PAWL	107	2	995160	GRIP - MOLDED
45	1	110919	SEAT FR PIVOT	108	1	995300	DECAL - TB-PLUS
46	1	110953	LEVER ARM - L	109	1	995301	DECAL - TB-MINUS
47	1	110954	LEVER ARM - R	110	1	995308	DECAL - SEAT-POWER
48	1	110955	FRAME - MAIN-LEG EXT PRO	111	1	995324	DECAL - MADE IN THE USA
49	1	110956	WELDT - DISPLAY MT	112	1	995381	DECAL - SERIAL NUMBER - STRENGTH
50	1	112180	SHAFT - PUSH ARM	113	1	995418	BAG - 4 X 6 X 4MIL-ZIP LOCK
51	1	112181	PAWL HANDLE	114	1	995615	PLACARD - ENG-POWER-BLK
52	1	112182	SEAT BACK PIVOT SFT	115	1	995616	PLACARD - ENG-KEY-RED
53	1	112221	PIVOT SHAFT				
54	4	112242	CLAMP DISC				
55	4	113040	SHOULDER SLEEVE - 1/2 X 1/2				
56	2	115000	BUSHING - TANK				
57	2	115005	CLEVIS - CYLINDER-2-1/2				
58	2	115006	3/4 END CAP				
59	1	115010	RACK - MACHINED				
60	8	115051	BEARING - FLANGE-.5 ID				
61	10	115052	BEARING - FLANGE-.625 ID				
62	2	115054	PLUG - 2 IN SQ-KEISER				
63	2	115055	WASHER - UPHOLSTERY ROLLER				

1133XP-SA



PRINTED ON: 11/4/2021 SW2006 V5.1

X:\drawings\\_REVISION\11\_LEG\_EXTENSION

**KEISER**<sup>®</sup>

2470 South Cherry Ave. Phone: (559) 256-8000  
 Fresno, CA, USA 93706-5004 Fax: (559) 256-8100

THE INFORMATION DISCLOSED HEREIN WAS ORIGINATED BY AND IS THE PROPERTY OF KEISER CORP. AND ALL PATENT, PROPRIETARY, DESIGN, USE, SALE, MANUFACTURING, AND REPRODUCTION RIGHTS THERETO ARE RESERVED BY KEISER CORP.

DIMENSIONS ARE IN INCHES  
 DIMENSIONS IN [ ] ARE MILLIMETERS  
 BREAK SHARP EDGES .005-.015 [.10-.40]  
 MACHINED SURFACE FINISH IS  
 63 MICROINCHES [1.6 MICROMETERS]  
 DO NOT SCALE DRAWING

DRAWN BY: BJU	DATE DRAWN: 11/24/20	CHECKED BY: LC	DATE CHECKED: 1/13/21
---------------	----------------------	----------------	-----------------------

MATERIAL:  
 RAW MAT:

REV	ECO	REVISION DESCRIPTION	BY	CKD	DATE
B	3976	REFERENCE ECO MEMO FOR DETAILS	BJU	LC	11/4/21

TITLE: **A300 LEG EXT PRO - PWR-SA**  
 SHEET **2** OF **2** SCALE: **1:10** DRAWING SIZE: **B** PART#: **1133XP-SA**