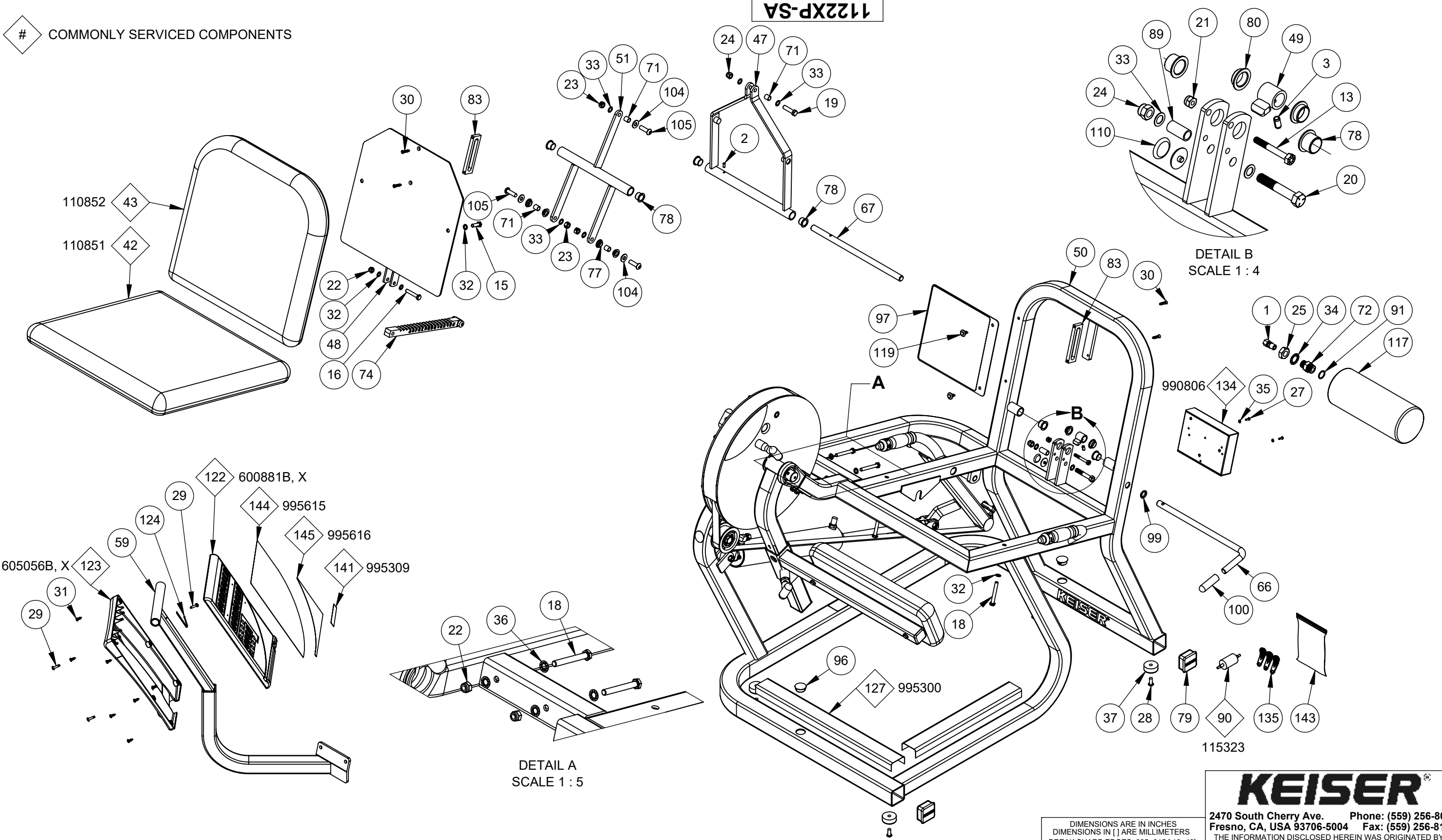


1122XP-SA

COMMONLY SERVICED COMPONENTS



NOTE:

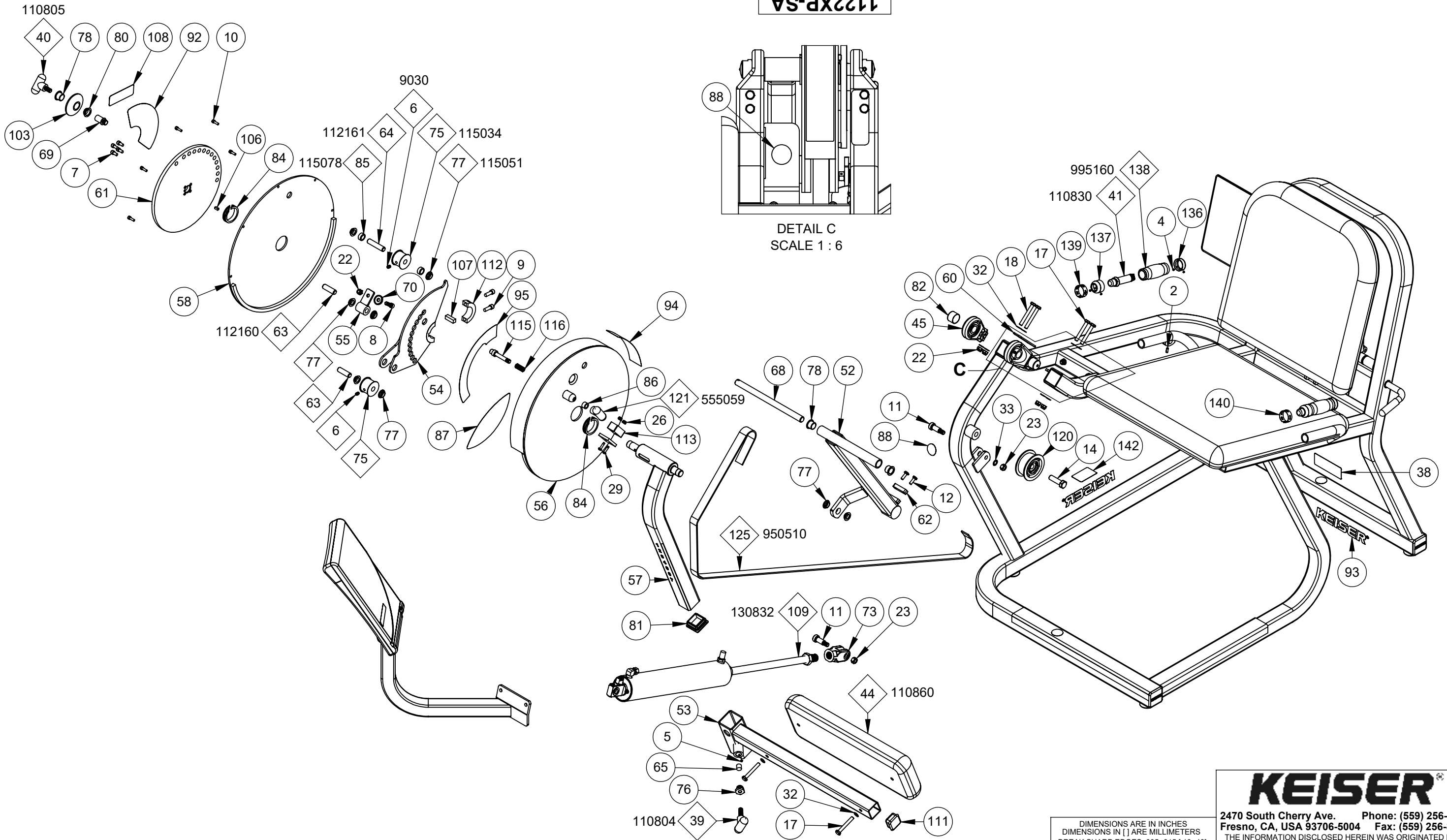
(1) THIS DRAWING COVERS: 1122BP, 1122PP AND 1122SP
 (2) FOLLOW ALL TOP LEVEL PROCEDURES

KEISER[®]
 2470 South Cherry Ave. Phone: (559) 256-8000
 Fresno, CA, USA 93706-5004 Fax: (559) 256-8100
 THE INFORMATION DISCLOSED HEREIN WAS ORIGINATED BY
 AND IS THE PROPERTY OF KEISER CORP. AND ALL PATENT,
 PROPRIETARY, DESIGN, USE, SALE, MANUFACTURING, AND
 REPRODUCTION RIGHTS THERETO ARE RESERVED BY KEISER
 CORP.

									DIMENSIONS ARE IN INCHES DIMENSIONS IN [] ARE MILLIMETERS BREAK SHARP EDGES .005-.015 [.10-.40] MACHINED SURFACE FINISH IS 63 MICRONS [1.6 MICROMETERS] DO NOT SCALE DRAWING		
						DRAWN BY: BJU DATE DRAWN: 4/9/21 MATERIAL: RAW MAT:			CHECKED BY: LC DATE CHECKED: 7/1/21 MASS (Kg):		
A 3877 RFP			BJU LC 7/1/21			TITLE: A250 LEG EXT W/RNGE LTR - PWR-SA					
REV ECO			REVISION DESCRIPTION			BY CKD DATE			SHEET 1 OF 3 SCALE: 1:10 DRAWING SIZE: B PART#: 1122XP-SA		

X:\drawings\REVISION11_LEG_EXTENSION PRINTED ON: 7/2/2021 SW2006 V5.1

1122XP-SA



DETAIL C
SCALE 1 : 6

PRINTED ON: 7/2/2021 SW2006 V5.1

X:\drawings\REVISION\11_LEG_EXTENSION

KEISER[®]
 2470 South Cherry Ave. Phone: (559) 256-8000
 Fresno, CA, USA 93706-5004 Fax: (559) 256-8100

THE INFORMATION DISCLOSED HEREIN WAS ORIGINATED BY AND IS THE PROPERTY OF KEISER CORP. AND ALL PATENT, PROPRIETARY, DESIGN, USE, SALE, MANUFACTURING, AND REPRODUCTION RIGHTS THERETO ARE RESERVED BY KEISER CORP.

DIMENSIONS ARE IN INCHES
 DIMENSIONS IN [] ARE MILLIMETERS
 BREAK SHARP EDGES .005-.015 [.10-.40]
 MACHINED SURFACE FINISH IS
 63 MICROINCHES [1.6 MICROMETERS]
 DO NOT SCALE DRAWING

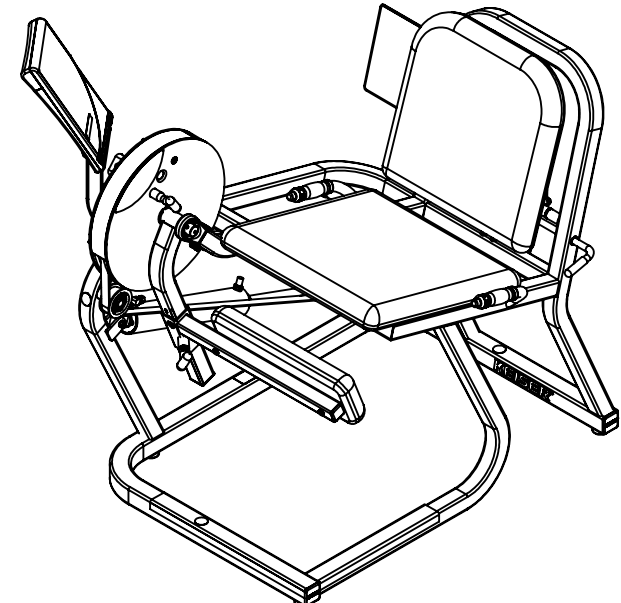
DRAWN BY: BJU	DATE DRAWN: 4/9/21	CHECKED BY: LC	DATE CHECKED: 7/1/21
MATERIAL:		MASS (Kg):	
RAW MAT:			
TITLE: A250 LEG EXT W/RNGE LTR - PWR-SA			
SHEET 2 OF 3	SCALE: 1:10	DRAWING SIZE: B	PART#: 1122XP-SA

REV	ECO	RFP	REVISION DESCRIPTION	BY	CKD	DATE
A	3877	RFP		BJU	LC	7/1/21

ITEM NO.	QTY.	PART NO.	TITLE	ITEM NO.	QTY.	PART NO.	TITLE
1	1	8079	CON - 3/8C X 1/4M	64	1	112161	SHAFT - .5 X 2.31 SS
2	2	9001	PIN SPRING - 3/16 X 1/2	65	1	112162	SPACER
3	1	9003	PIN SPRING - 1/4 X 1/2	66	1	112181	PAWL HANDLE
4	8	9014	SCREW - HSSS 8-32 X 1/8 SS	67	1	112182	SEAT BACK PIVOT SFT
5	1	9015	SET SCREW - HSSS #8-32 X 3/16 BLK	68	1	112183	PIVOT SHAFT SS
6	3	9030	SCREW - HSSS 1/4-20 X 3/8 ZP	69	1	112206	RANGE LIMITER STOP ZP
7	4	9098	SCREW - SHCS 1/4-20 X 1/2 ZP	70	1	112242	CLAMP DISC
8	1	9101	SCREW - SHCS 5/16-18 X 1 ZP	71	4	113040	SHOULDER SLEEVE - 1/2 X 1/2
9	2	9105	SCREW - SHCS 5/16-24 X 7/8	72	1	115000	BUSHING - TANK
10	5	9116	SCREW - SHCS #10-32 X 5/8 ZP	73	1	115005	CLEVIS - CYLINDER-2-1/2
11	2	9127	SCREW - SHSS 1/2 X 1 ZP	74	1	115010	RACK - MACHINED
12	2	9151	SCREW - HHCS 1/4-20 X 3/4 ZP	75	2	115034	ROLLER
13	1	9152	SCREW - HHCS 1/4-20 X 2 ZP	76	1	115036	THREADED INSERT - 5/8 X 3/8 SS
14	1	9155	SCREW - HHCS 1/2-20 X 1 3/4 ZP	77	12	115051	BEARING - FLANGE-.5 ID
15	2	9176	SCREW - HHCS 5/16-18 X 1 ZP	78	9	115052	BEARING - FLANGE-.625 ID
16	1	9177	SCREW - HHCS 5/16-18 X 1-3/4 ZP	79	2	115054	PLUG - 2 IN SQ-KEISER
17	4	9179	SCREW - HHCS 5/16-18 X 2-1/4 ZP	80	3	115056	BEARING - FLANGE-.625 ID SHORT
18	6	9180	SCREW - HHCS 5/16-18 X 2-1/2 ZP	81	1	115059	CAP - 1-3/4 SQ
19	1	9203	SCREW - HHCS 3/8-16 X 1 1/2 ZP	82	2	115067	CAP - Ø1 X 3/4
20	1	9206	SCREW - HHCS 3/8-16 X 2 1/4 ZP	83	2	115072	GUIDE / BEARING
21	1	9225	NUT - HELN 1/4-20 ZP	84	2	115077	BUSHING
22	8	9226	NUT - HELN 5/16-18 ZP	85	2	115078	SPACER
23	5	9227	NUT - HRLN 3/8-16 ZP	86	1	115082	SPACER - 3/8 ID
24	2	9228	NUT - HELN 3/8-16 ZP	87	1	115300	DECAL - STARTING POSITION
25	1	9231	NUT - HJN 3/4-10 ZP	88	2	115301	FINGER WARNING DECAL
26	2	9246	NUT - HELN #10-32 ZP	89	1	115314	TUBE - SLEEVE
27	2	9272	SCREW - CRPHTS-TF #6-32 X 1/2 SS	90	1	115323	FILTER - IN LINE
28	4	9279	SCREW - SBHTS-TF 5/16-18 X 3/4 ZP	91	1	115333	O-RING - .943 X .737 X .103
29	7	9285	SCREW - CRPHTS 10-24 X 3/4 ZP	92	1	115370	DECAL - ROM POSITION
30	4	9288	SCREW - CRPHTS TF 10-24 X 1 ZP	93	2	115372	DECAL - KEISER LOGO-1 1/4" RED
31	6	9291	SCREW - CRPHTS 8 X 1/2 ZP	94	1	115376	DECAL-STARTING POS CHART-CURVED
32	16	9353	WASHER - ACFT-5/16 ZP	95	1	115377	DECAL - POSITION
33	8	9355	WASHER - FW-ACFT-3/8 SS	96	2	115404	PLUG - HOLE-1 DIA
34	1	9364	WASHER - ITLW 3/4 ZP	97	1	115416	PLACARD - A250 LEG EXT
35	2	9366	WASHER - ITLW #6 ZP	98	7	115423	TIE - 8 IN-PL BLK
36	4	9389	WASHER - ITLW 5/16 ZP	99	1	115424	SNAP-IN NYLINER
37	4	105423	BUMPER - MOLDED GLIDE	100	1	115427	GRIP - 0500 X 2500
38	1	105443	DECAL - SERIAL NUMBER	101	1	115429	PLASTIC TIE - 10" RED
39	1	110804	ASSY - KNOB-1.25	102	2	115430	PLASTIC TIE - 3" BLK
40	1	110805	ASSY - KNOB-0776	103	1	115436	TAPERED RUBBER DONUT
41	2	110830	ASSY - TB VALVE-DIG	104	3	115450	WASHER - FW .88 X .39 X .07 NP
42	1	110851	SEAT BOTTOM CUSHION A250	105	3	115451	SCREW - SBHCS 3/8-16 X 1-1/4 NP
43	1	110852	SEAT BACK CUSHION A250	106	1	121827	SMALL KEY
44	1	110860	LEG SUPPORT CUSHION	107	1	121899	LARGE KEY
45	2	110894	BEARING ASSY	108	1	125300	DECAL - STOP POSITION
46	1	110897	ASSY - QD-MALE	109	1	130832	ASSY - EC-2.5 X 12
47	1	110909	SEAT BACK PIVOT	110	2	135055	STEM BUMPER
48	1	110912	SEAT BACK	111	1	135056	CAP - 1.500 SQ-PL
49	1	110916	PAWL	112	1	143190	SADDLE - C-BORE
50	1	110918	MAIN FRM	113	1	165421	STOP - EA-URETHANE
51	1	110919	SEAT FR PIVOT	114	1	170891	ASSY - MUFFLER-LONG
52	1	110924	LEVER ARM	115	1	172180	PLUNGER
53	1	110925	LEG UPHOL MT	116	1	175500	SPRING - PLUNGER
54	1	110927	TENSION ADJUSTER	117	1	255318	TANK - 140 CU IN
55	1	110928	BELT MT	118	1	265310	Y CONNECTOR - 1/8 DIA-PL
56	1	110929	L-RANGE-COVER				
57	1	110930	WELDT - EX ARM-RANGE LIMITER CHR				
58	1	110931	R-RANGE-COVER				
59	1	110932	WELDT - DISPLAY MT				
60	1	111819	STOP PLATE				
61	1	111887	END RANGE DISC				
62	1	111896	CLAMP W HOLE				
63	2	112160	SHAFT - .5 X 1.69 SS				

1122XP-SA

ITEM NO.	QTY.	PART NO.	TITLE
119	2	265404	PLASTIC RIVET
120	1	265419	BELT PULLEY
121	1	555059	KNOB - T-BLACK
122	1	600881X	DISPLAY BOX - 5 WIN
123	1	605056	DISPLAY BOX - BACK
124	1	605428	GROUND CLAMP - DISPLAY
125	1	950510	KEVLAR BELT 1
126	1	953108	TUBING - 1/4 URETHANE BLK
127	1	955300	STRIP - PROTECTOR-4 INCH
128	2	962004	CON - 2MM-2-S
129	4	962005	CON - MOD - P-4P-4C
130	1	962016	CON - MOD-COUPLER-6-6
131	4	962017	CON-MOD-P-6P-6C
132	1	966701	WIRE - CABLE-4-26 GA
133	1	966702	WIRE - CABLE-6-26GA
134	1	990806	ASSY - PROCESSOR BOX
135	3	990812	KEY - DATA-CS
136	2	995000	COLLAR - GRIP
137	2	995001	CAP - GRIP W HOLE
138	2	995160	GRIP - MOLDED
139	1	995300	DECAL - TB-PLUS
140	1	995301	DECAL - TB-MINUS
141	1	995309	DECAL - SEAT, LEG, ROM, ROM-POWER
142	1	995324	DECAL - MADE IN THE USA
143	1	995418	BAG - 4 X 6 X 4MIL-ZIP LOCK
144	1	995615	PLACARD - ENG-POWER-BLK
145	1	995616	PLACARD - ENG-KEY-RED



KEISER®
 2470 South Cherry Ave. Phone: (559) 256-8000
 Fresno, CA, USA 93706-5004 Fax: (559) 256-8100
 THE INFORMATION DISCLOSED HEREIN WAS ORIGINATED BY AND IS THE PROPERTY OF KEISER CORP. AND ALL PATENT, PROPRIETARY, DESIGN, USE, SALE, MANUFACTURING, AND REPRODUCTION RIGHTS THERETO ARE RESERVED BY KEISER CORP.

DIMENSIONS ARE IN INCHES
 DIMENSIONS IN [] ARE MILLIMETERS
 BREAK SHARP EDGES .005-.015 (.10-.40)
 MACHINED SURFACE FINISH IS
 63 MICROINCHES [1.6 MICROMETERS]
 DO NOT SCALE DRAWING

DRAWN BY: BJU	DATE DRAWN: 4/9/21	CHECKED BY: LC	DATE CHECKED: 7/1/21
MATERIAL:		RAW MAT:	
A		3877 RFP	
REV	ECO	REVISION DESCRIPTION	BY CKD DATE
TITLE: A250 LEG EXT W/RNGE LTR - PWR-SA		SHEET 3 OF 3	
SCALE: 1:18		DRAWING SIZE: B	
PART#: 1122XP-SA		MASS (Kg):	

PRINTED ON: 7/2/2021 SW2006 V5.1

X:\drawings\REVISION\11_LEG_EXTENSION