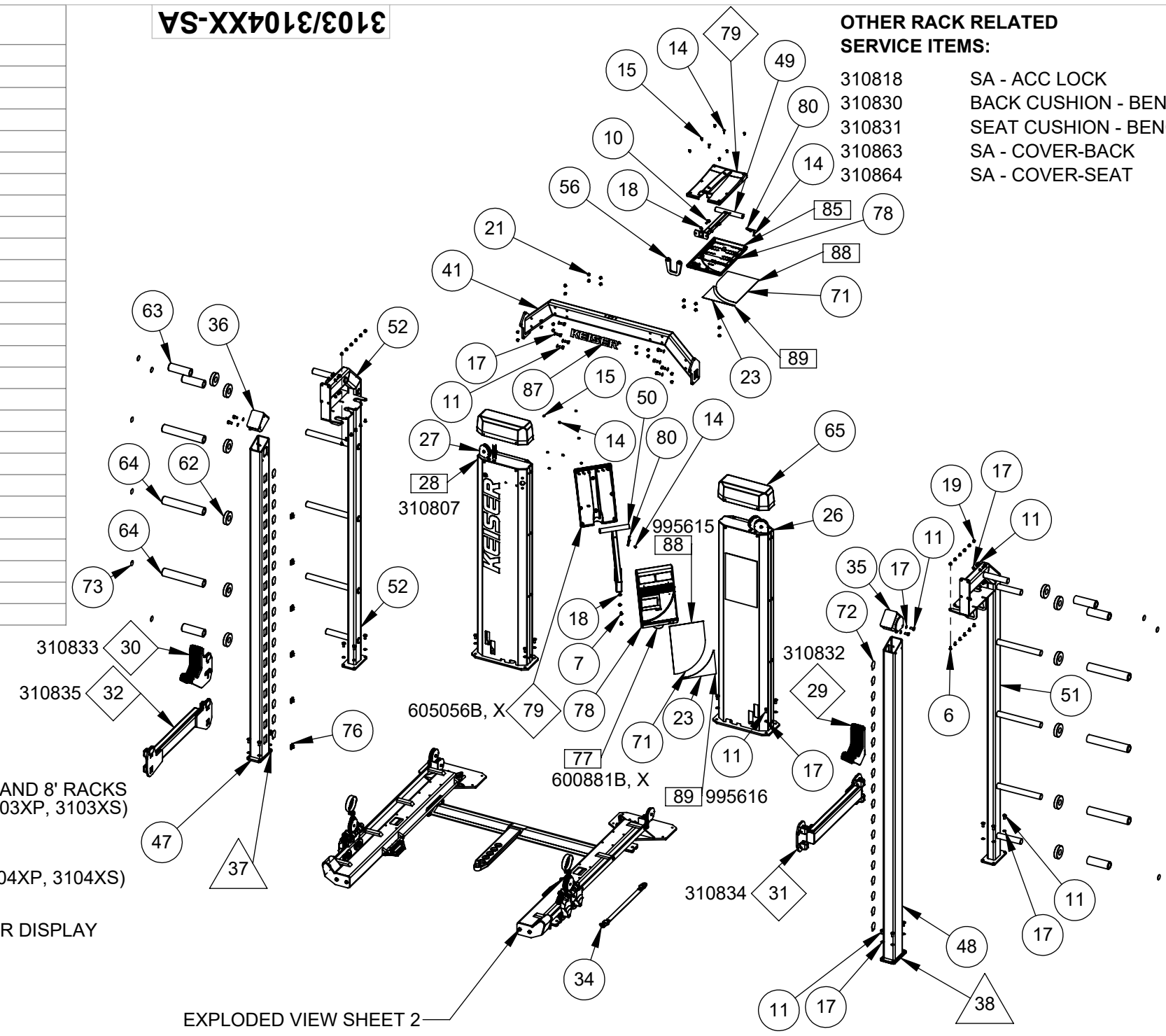


ITEM NO.	QTY.	PART NO.	TITLE	ITEM NO.	QTY.	PART NO.	TITLE
1	1	8071	TEE - 1/4P	63	6	315053	SLEEVE - WT STORAGE-10LB
2	1	8072	STEM TEE - 1/4P	64	6	315055	SLEEVE - WT STORAGE-45LB
3	2	9002	PIN SPRING - 3/16 X 7/8	65	2	315065	COVER - TOP-FW
4	8	9078	SCREW - SCSHCS 3/8-16 X 3/4 ZP	66	6	315069	HOLDER - PEDAL
5	6	9108	SCREW - SHCS 1/4-20 X 1 ZP	67	2	315075	CAP - FOOT ADJ-L
6	12	9121	SCREW - SBHCS 5/16-18 X 1/2 ZP	68	2	315076	CAP - FOOT ADJ-R
7	2	9135	SCREW - SBHCS 5/16-18 X 3/4 ZP	69	4	315402	PAD - FOOT-FW
8	6	9157	SCREW - HHCS 1/4-20 X 1 GR5 ZP	70	4	315413	SPRING - EXT-FOOT PEDAL
9	2	9165	SCREW - SHCS 5/16-18 X 1/2 ZP	71	2	315600	PLAC - ENG-RACK-POWER
10	2	9176	SCREW - HHCS 5/16-18 X 1 ZP	72	2	315611	DECAL-POSITION & LOCK-FW
11	52	9200	SCREW - HHCS 3/8-16 X 3/4 ZP	73	1	315612	DECAL-WEIGHT STORAGE
12	6	9242	NUT - HEJN 1/4-20 ZP	74	2	315618	DECAL - FOOT ADJ-PLUS
13	2	9254	SCREW - HHMS #10-24 X 1-1/4 ZP	75	2	315619	DECAL - FOOT ADJ-MINUS
14	6	9285	SCREW - CRPHTS 10-24 X 3/4 ZP	76	6	545055	ANCHOR - CABLE PL
15	12	9291	SCREW - CRPHTS 8 X 1/2 ZP	77	1	600881	DISPLAY BOX 5 - WIN
16	8	9298	SCREW - SCSHCS 10-24 X 3/4 ZP	78	2	600882	DISPLAY BOX - 2 WIN
17	52	9355	WASHER - FW-ACFT-3/8 SS	79	2	605056	DISPLAY BOX - BACK
18	4	9389	WASHER - ITLW 5/16 ZP	80	2	605428	GROUND CLAMP - DISPLAY
19	12	9394	NUT - HAN 5/16-18	81	1	954212	ROPE - 5MM-POLYESTER
20	1	105443	DECAL - SERIAL NUMBER	82	1	955300	STRIP - PROTECTOR-4 INCH
21	24	115402	PLUG - HOLE-3/8 DIA	83	1	962016	CON - MOD-COUPLER-6-6
22	1	115429	PLASTIC TIE - 10" RED	84	3	990812	KEY - DATA-CS
23	2	295604	PLAC - ENG-LOW DISP	85	1	990828	DISPLAY BOX - TOP
24	12	305062	BUSHING - 026067029	86	1	995418	BAG - 4 X 6 X 4MIL-ZIP LOCK
25	8	305065	PULLEY - 2.500 DIA-MOLDED	87	1	995602	DECAL - KEISER LOGO-2" RED
26	1	310800	L POWER MODULE	88	2	995615	PLACARD - ENG-POWER-BLK
27	1	310801	R POWER MODULE	89	2	995616	PLACARD - ENG-KEY-RED
28	1	310807	R POWER MODULE-PWR				
29	1	310832	BAR CATCH - L-FW				
30	1	310833	BAR CATCH - R-FW				
31	1	310834	SPOTTING BAR - CANT-L				
32	1	310835	SPOTTING BAR - CANT-R				
33	2	310843	PULLEY CARRIAGE				
34	1	310849	EXT STRAP-SET				
35	1	310907	WELDT - L MITER CAP-FW				
36	1	310908	WELDT - R MITER CAP-FW				
37	1	310921	WELDT - R POST-9				
38	1	310922	WELDT - L POST-9				
39	1	310925	WELDT - L BOT FRAME-FW 05 SHORT				
40	1	310926	WELDT - R BOT FRAME-FW 05 SHORT				
41	1	310927	WELDT - CROSS BRACE W DIS-FW				
42	1	310932	WELDT - L PULLEY RAIL-FW 05 SHORT				
43	1	310933	WELDT - R PULLEY RAIL-FW 05 SHORT				
44	1	310943	BOT CROSS FRAME - FW				
45	1	310944	WELDT - L PULLEY COVER-FW				
46	1	310945	WELDT - R PULLEY COVER-FW				
47	1	310960	WELDT - R POST-8				
48	1	310961	WELDT - L POST-8				
49	1	310965	WELDT - DISPLAY MT-UPPER-FW				
50	1	311002	DISPLAY MT				
51	1	311015	BUMPER PLATE STORAGE - L				
52	1	311016	BUMPER PLATE STORAGE - R				
53	1	311021	PIVOT LINK - L-05-SHORT				
54	1	311022	PIVOT LINK - R-05-SHORT				
55	2	311821	PLATE - LINK				
56	1	311877	PLATE - HOOK-SUSP TRAINER				
57	1	312070	TRAY - ROUTING				
58	4	315001	HOUSING - PULLEY-BARBELL				
59	2	315002	HOUSING - AIR ATTACH-BARBELL				
60	2	315003	KNOB - ROPE-HOUSING				
61	2	315026	FOOT ADJ - EXTR-3.250				
62	12	315050	COLLAR - WT STORAGE-FW				

3103/3104XX-SA

- OTHER RACK RELATED SERVICE ITEMS:**
- 310818 SA - ACC LOCK
 - 310830 BACK CUSHION - BENCH
 - 310831 SEAT CUSHION - BENCH
 - 310863 SA - COVER-BACK
 - 310864 SA - COVER-SEAT



- # PARTS USED IN COMMON ASSEMBLY AND 8' RACKS (MODELS: 3103BP, 3103PP, 3103PS, 3103XP, 3103XS)
- # PARTS USED FOR 9' RACKS (MODELS: 3104BP, 3104PP, 3104PS, 3104XP, 3104XS)
- # PARTS USED FOR RACKS WITH POWER DISPLAY (MODELS: 3103BP, 3103PP, 3103XP, 3104BP, 3104PP, 3104XP)
- # COMMONLY SERVICED COMPONENTS
- # PARTS ASSOCIATED WITH A SERVICE ASSEMBLY

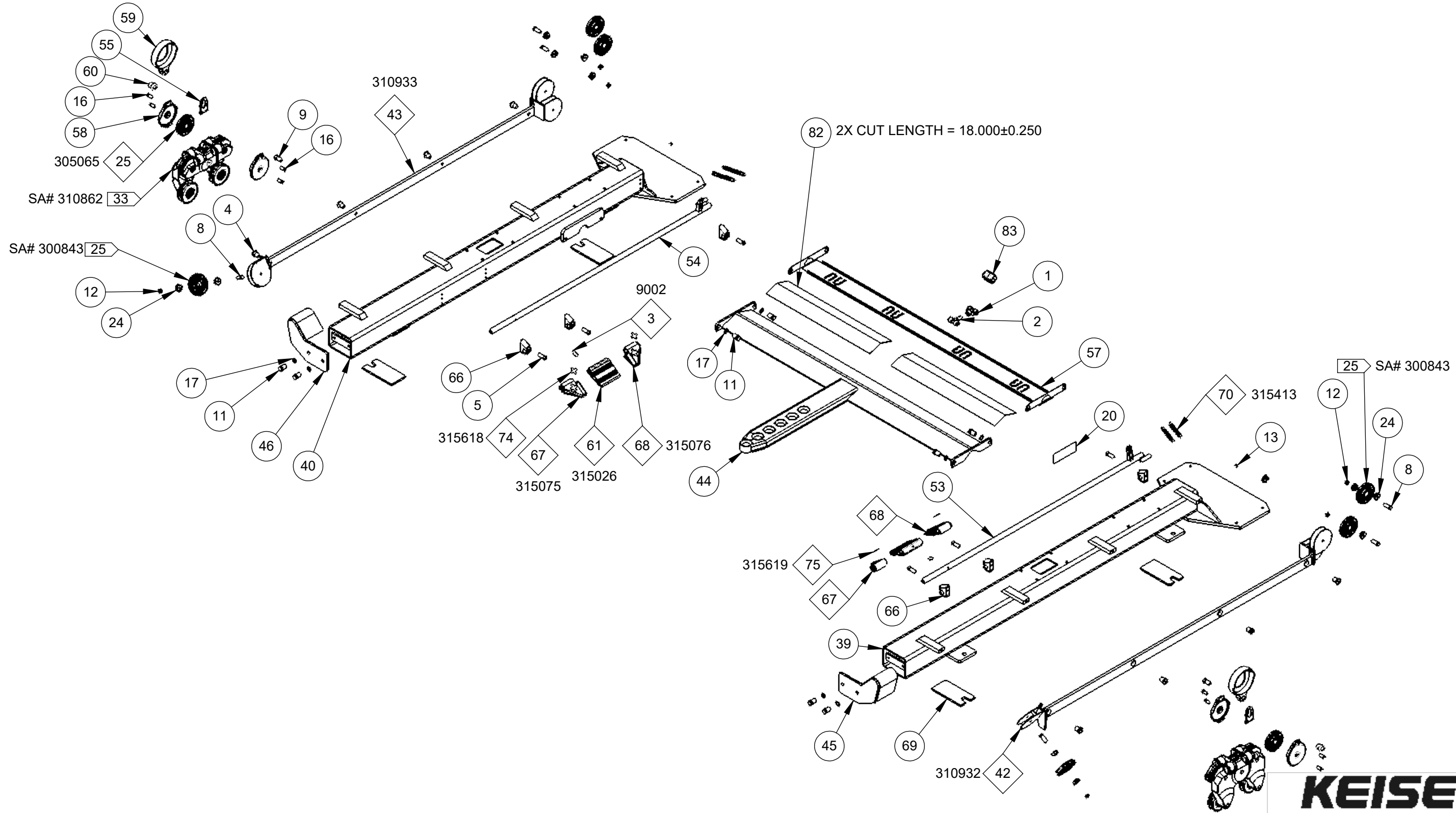
NOTE:
 (1) THIS DRAWING COVERS: 3103BP, 3103PP, 3103PS, 3103XP, 3103XS, 3104BP, 3104PP, 3104PS, 3104XP, 3104XS
 (2) FOLLOW ALL TOP LEVEL PROCEDURES

DIMENSIONS ARE IN INCHES
 DIMENSIONS IN [] ARE MILLIMETERS
 BREAK SHARP EDGES .005-.015 [.10-.40]
 MACHINED SURFACE FINISH IS
 63 MICROINCHES [1.6 MICROMETERS]
 DO NOT SCALE DRAWING

KEISER®
 2470 South Cherry Ave. Phone: (559) 256-8000
 Fresno, CA, USA 93706-5004 Fax: (559) 256-8100
 THE INFORMATION DISCLOSED HEREIN WAS ORIGINATED BY AND IS THE PROPERTY OF KEISER CORP. AND ALL PATENT, PROPRIETARY, DESIGN, USE, SALE, MANUFACTURING, AND REPRODUCTION RIGHTS THERETO ARE RESERVED BY KEISER CORP.

REV	ECO	REFERENCE PRODUCTION DRAWING REV J	JPR	LC	6/4/21	TITLE:	8' & 9' HALF RACK - SA		
A	3907	REFERENCE PRODUCTION DRAWING REV J	JPR	LC	6/4/21	SHEET	1	OF	2
BY	CKD	REVISION DESCRIPTION	DATE	SCALE:	1:30	DRAWING SIZE:	B	PART#:	3103/3104XX-SA

X:\drawings\REVISION\31_FREE_WEIGHTS\ PRINTED ON: 6/4/2021 SW2006 V5.1



PRINTED ON: 6/4/2021 SW2006 V5.1

X:\drawings\REVISION\31_FREE_WEIGHTS\



2470 South Cherry Ave. Phone: (559) 256-8000
 Fresno, CA, USA 93706-5004 Fax: (559) 256-8100

THE INFORMATION DISCLOSED HEREIN WAS ORIGINATED BY AND IS THE PROPERTY OF KEISER CORP. AND ALL PATENT, PROPRIETARY, DESIGN, USE, SALE, MANUFACTURING, AND REPRODUCTION RIGHTS THERETO ARE RESERVED BY KEISER CORP.

DIMENSIONS ARE IN INCHES
 DIMENSIONS IN [] ARE MILLIMETERS
 BREAK SHARP EDGES .005-.015 [.10-.40]
 MACHINED SURFACE FINISH IS
 63 MICROINCHES [1.6 MICROMETERS]
 DO NOT SCALE DRAWING

DRAWN BY: JPR	DATE DRAWN: 5/24/21	CHECKED BY: LC	DATE CHECKED: 6/4/21
---------------	---------------------	----------------	----------------------

MATERIAL: RAW MAT:

REV	ECO	REVISION DESCRIPTION	BY	CKD	DATE
A	3907	REFERENCE PRODUCTION DRAWING REV J	JPR	LC	6/4/21

TITLE: 8' & 9' HALF RACK - SA
 SHEET 2 OF 2 SCALE: 1:12 DRAWING SIZE: B PART#: 3103/3104XX-SA