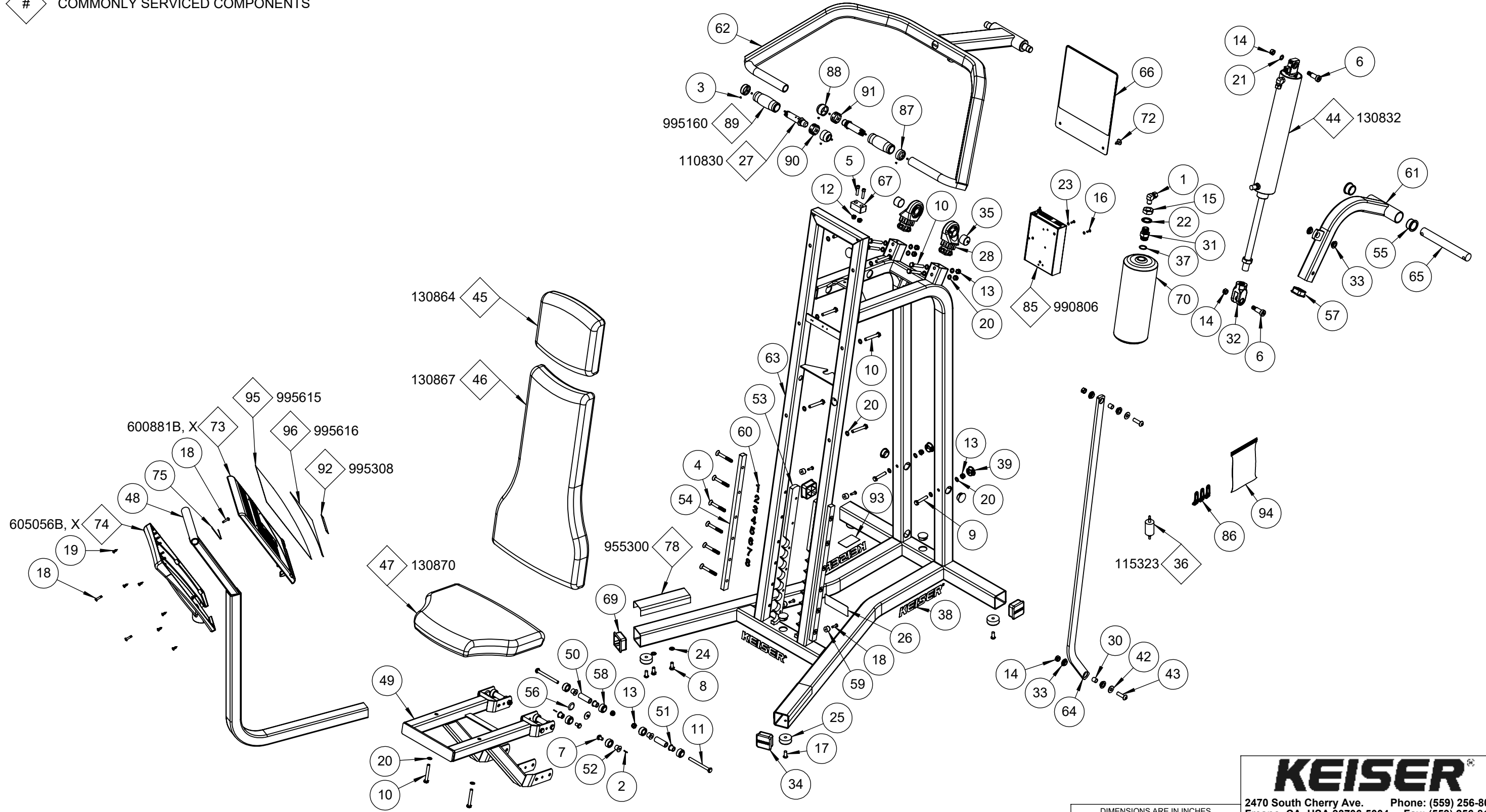


1621XP-SA

COMMONLY SERVICED COMPONENTS



NOTE:
 (1) THIS DRAWING COVERS: 1621BP, 1621PP AND 1621SP
 (2) FOLLOW ALL TOP LEVEL PROCEDURES

A	3860	RFP	JC	LC	7/14/21	
REV	ECO		BY	CKD	DATE	

DIMENSIONS ARE IN INCHES
 DIMENSIONS IN [] ARE MILLIMETERS
 BREAK SHARP EDGES .005-.015 [.10-.40]
 MACHINED SURFACE FINISH IS
 63 MICROINCHES [1.6 MICROMETERS]
 DO NOT SCALE DRAWING

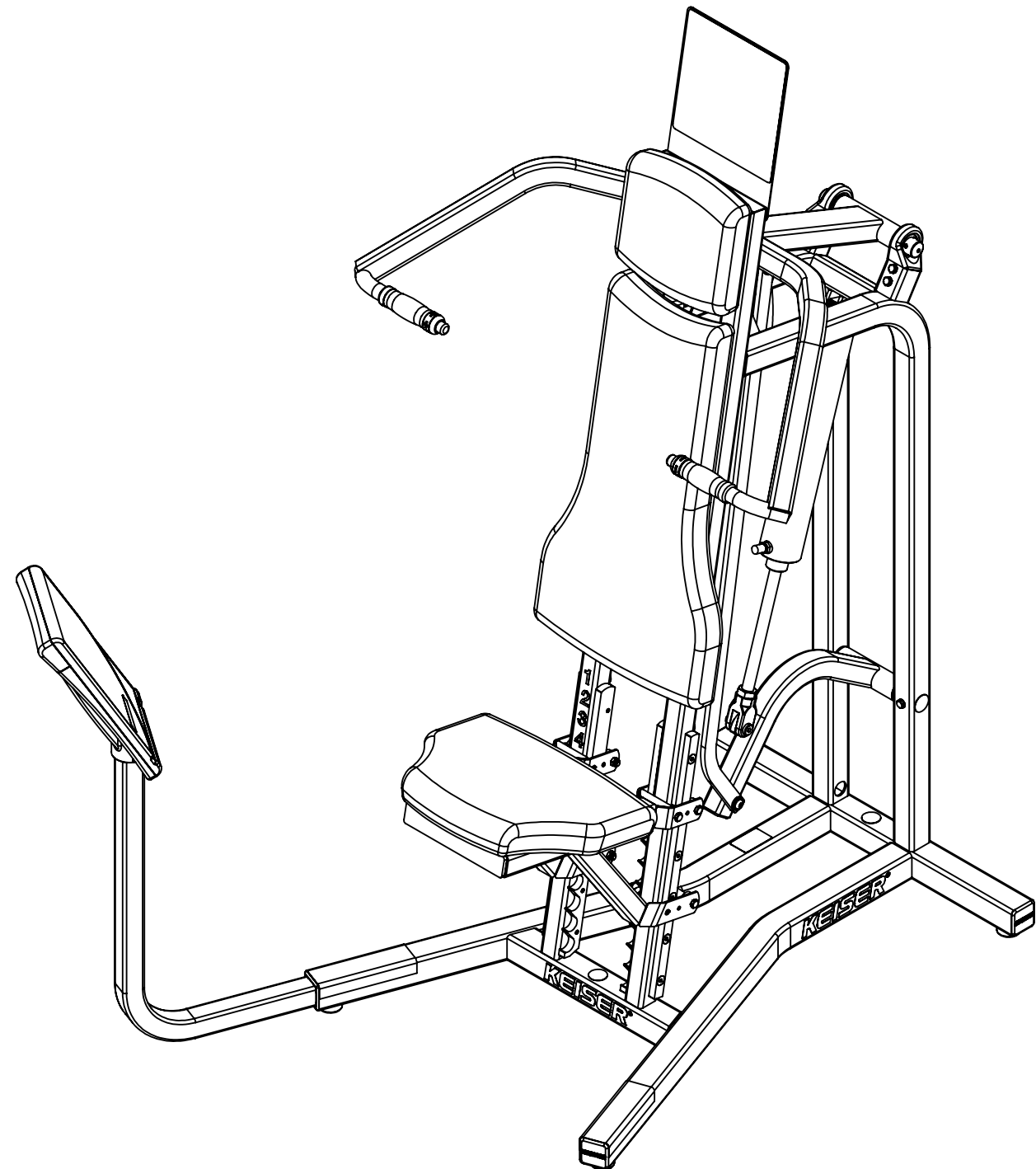
KEISER[®]
 2470 South Cherry Ave. Phone: (559) 256-8000
 Fresno, CA, USA 93706-5004 Fax: (559) 256-8100
 THE INFORMATION DISCLOSED HEREIN WAS ORIGINATED BY
 AND IS THE PROPERTY OF KEISER CORP. AND ALL PATENT,
 PROPRIETARY, DESIGN, USE, SALE, MANUFACTURING, AND
 REPRODUCTION RIGHTS THERETO ARE RESERVED BY KEISER
 CORP.

DRAWN BY: JC	DATE DRAWN: 6/8/21	CHECKED BY: LC	DATE CHECKED: 7/14/21
MATERIAL:		RAW MAT:	
		MASS (Kg):	
TITLE: A250 MILITARY PRESS - PWR-SA			
SHEET 1 OF 2	SCALE: 1:12	DRAWING SIZE: B	PART#: 1621XP-SA

X:\drawings\REVISION\16_MILITARY_PRESS\ PRINTED ON: 7/14/2021 SW2006 V5.1

ITEM NO.	QTY.	PART NO.	TITLE	ITEM NO.	QTY.	PART NO.	TITLE
1	1	8153	CAF - ME-3/8 C X 1/4 M	64	1	161883	DRAG LINK
2	4	9009	PIN SPRING 0063 X 0500 ZP	65	1	162247	LEVER - ARM PIVOT SFT
3	8	9014	SCREW - HSSS 8-32 X 1/8 SS	66	1	165416	PLACARD - A250 MILITARY PRESS
4	12	9079	SCREW - SFCHCS 5/16-18 X2 1/2	67	1	165421	STOP - EA-URETHANE
5	2	9108	SCREW - SHCS 1/4-20 X 1 ZP	68	1	170891	ASSY - MUFFLER-LONG
6	2	9127	SCREW - SHSS 1/2 X 1 ZP	69	1	175051	2 SQ. BUSHING
7	4	9174	SCREW - HHCS 5/16-18 X 1/2 ZP	70	1	255318	TANK - 140 CU IN
8	2	9175	SCREW - HHCS 5/16-18 X 3/4 ZP	71	1	265310	Y CONNECTOR - 1/8 DIA-PL
9	2	9177	SCREW - HHCS 5/16-18 X 1-3/4 ZP	72	2	265404	PLASTIC RIVET
10	12	9179	SCREW - HHCS 5/16-18 X 2-1/4 ZP	73	1	600881X	DISPLAY BOX - 5 WIN
11	4	9183	SCREW - HHCS 5/16-18 X 3-1/2 ZP	74	1	605056	DISPLAY BOX - BACK
12	2	9225	NUT - HELN 1/4-20 ZP	75	1	605428	GROUND CLAMP - DISPLAY
13	10	9226	NUT - HELN 5/16-18 ZP	76	1	953101	TUBING - .375 OD X .062 W-PE BLK
14	4	9227	NUT - HRLN 3/8-16 ZP	77	1	953108	TUBING - 1/4 URETHANE BLK
15	1	9231	NUT - HJN 3/4-10 ZP	78	1	955300	STRIP - PROTECTOR-4 INCH
16	2	9272	SCREW - CRPHTS-TF #6-32 X 1/2 SS	79	2	962004	CON - 2MM-2-S
17	4	9279	SCREW - SBHTS-TF 5/16-18 X 3/4 ZP	80	4	962005	CON - MOD - P-4P-4C
18	7	9285	SCREW - CRPHTS 10-24 X 3/4 ZP	81	1	962016	CON - MOD-COUPLER-6-6
19	6	9291	SCREW - CRPHTS 8 X 1/2 ZP	82	4	962017	CON-MOD-P-6P-6C
20	20	9353	WASHER - ACFT-5/16 ZP	83	1	966701	WIRE - CABLE-4-26 GA
21	1	9355	WASHER - FW-ACFT-3/8 SS	84	1	966702	WIRE - CABLE-6-26 GA
22	1	9364	WASHER - ITLW 3/4 ZP	85	1	990806	ASSY - PROCESSOR BOX
23	2	9366	WASHER - ITLW #6 ZP	86	3	990812	KEY - DATA-CS
24	2	9389	WASHER - ITLW 5/16 ZP	87	2	995000	COLLAR - GRIP
25	4	105423	BUMPER - MOLDED GLIDE	88	2	995001	CAP - GRIP W HOLE
26	1	105443	DECAL - SERIAL NUMBER	89	2	995160	GRIP - MOLDED
27	2	110830	ASSY - TB VALVE-DIG	90	1	995300	DECAL - TB-PLUS
28	2	110894	BEARING ASSY	91	1	995301	DECAL - TB-MINUS
29	1	110897	ASSY - QD-MALE	92	1	995308	DECAL - SEAT-POWER
30	2	113040	SHOULDER SLEEVE - 1/2 X 1/2	93	1	995324	DECAL - MADE IN THE USA
31	1	115000	BUSHING - TANK	94	1	995418	BAG - 4 X 6 X 4MIL-ZIP LOCK
32	1	115005	CLEVIS - CYLINDER-2-1/2	95	1	995615	PLACARD - ENG-POWER-BLK
33	6	115051	BEARING - FLANGE-.5 ID	96	1	995616	PLACARD - ENG-KEY-RED
34	3	115054	PLUG - 2 IN SQ-KEISER				
35	2	115067	CAP - Ø 1 X 3/4				
36	1	115323	FILTER - IN LINE				
37	1	115333	O-RING - .943 X .737 X .103				
38	3	115372	DECAL - KEISER LOGO-1 1/4" RED				
39	7	115404	PLUG - HOLE-1 DIA				
40	17	115423	TIE - 8 IN-PL BLK				
41	1	115429	PLASTIC TIE - 10" RED				
42	2	115450	WASHER - FW .88 X .39 X .07 NP				
43	2	115451	SCREW - SBHCS 3/8-16 X 1-1/4 NP				
44	1	130832	ASSY - EC-2.5 X 12				
45	1	130864	CUSHION - HEAD-CURVED				
46	1	130867	CUSHION - BACK-CURVED				
47	1	130870	CUSHION - SEAT-CURVED				
48	1	130933	WELDT - DISPLAY MT				
49	1	130934	WELDT - FRM-SEAT				
50	4	132181	TUBE - ROLLER				
51	8	132200	AXLE				
52	4	132201	AXLE - THREADED				
53	2	135005	SEAT RACK				
54	2	135006	SEAT RAIL				
55	2	135050	BEARING - FLANGE-1" ID				
56	4	135055	STEM BUMPER				
57	1	135056	CAP - 1.500 SQ-PL				
58	12	135060	ROLLER				
59	4	135076	PLASTIC BUMPER				
60	1	135306	DECAL - SEAT-1-10				
61	1	160924	LEVER ARM				
62	1	160927	EX ARM				
63	1	160928	MAIN FRM				

1621XP-SA



KEISER[®]

2470 South Cherry Ave. Phone: (559) 256-8000
Fresno, CA, USA 93706-5004 Fax: (559) 256-8100

THE INFORMATION DISCLOSED HEREIN WAS ORIGINATED BY AND IS THE PROPERTY OF KEISER CORP. AND ALL PATENT, PROPRIETARY, DESIGN, USE, SALE, MANUFACTURING, AND REPRODUCTION RIGHTS THERETO ARE RESERVED BY KEISER CORP.

DIMENSIONS ARE IN INCHES
DIMENSIONS IN [] ARE MILLIMETERS
BREAK SHARP EDGES .005-.015 [.10-.40]
MACHINED SURFACE FINISH IS
63 MICROINCHES [1.6 MICROMETERS]
DO NOT SCALE DRAWING

DRAWN BY: JC	DATE DRAWN: 6/8/21	CHECKED BY: LC	DATE CHECKED: 7/14/21
--------------	--------------------	----------------	-----------------------

MATERIAL:	RAW MAT:	MASS (Kg):
-----------	----------	------------

REV	ECO	REVISION DESCRIPTION	BY	CKD	DATE
A	3860	RFP	JC	LC	7/14/21

TITLE:	A250 MILITARY PRESS - PWR-SA
SHEET 2 OF 2	SCALE: 1:10
DRAWING SIZE: B	PART#: 1621XP-SA

PRINTED ON: 7/14/2021 SW2006 V5.1
X:\drawings\REVISION\16_MILITARY_PRESS\