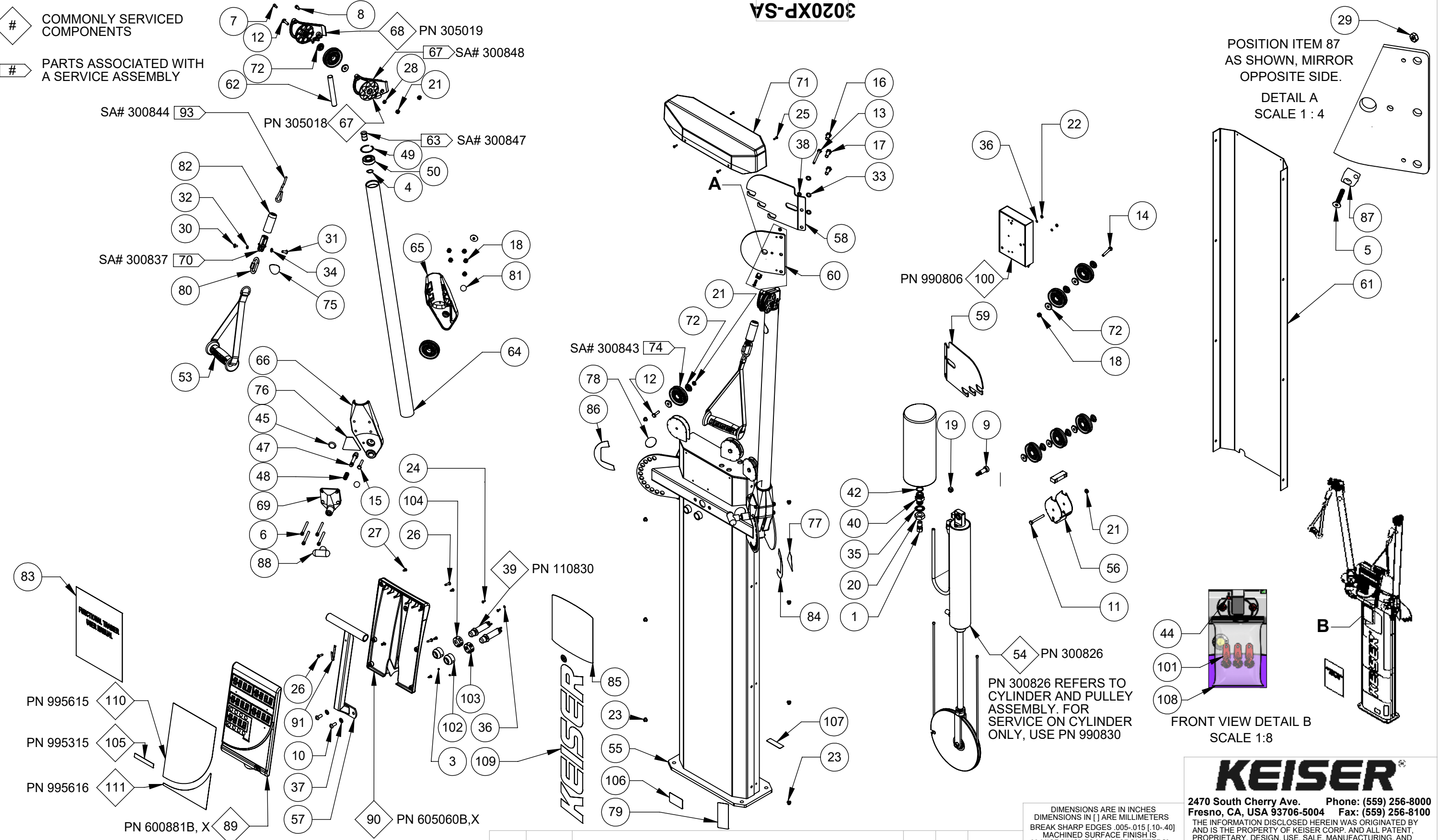


COMMONLY SERVICED COMPONENTS
 # PARTS ASSOCIATED WITH A SERVICE ASSEMBLY

3020XP-SA



POSITION ITEM 87 AS SHOWN, MIRROR OPPOSITE SIDE.

DETAIL A
SCALE 1 : 4

FRONT VIEW DETAIL B
SCALE 1:8

KEISER®

2470 South Cherry Ave. Phone: (559) 256-8000
 Fresno, CA, USA 93706-5004 Fax: (559) 256-8100
 THE INFORMATION DISCLOSED HEREIN WAS ORIGINATED BY AND IS THE PROPERTY OF KEISER CORP. AND ALL PATENT, PROPRIETARY, DESIGN, USE, SALE, MANUFACTURING, AND REPRODUCTION RIGHTS THERETO ARE RESERVED BY KEISER CORP.

NOTE:
 3020XP-SA COVERS THE FOLLOWING MODELS: 3020BP, 3020PP, AND 3020XP

A			3810	RFP	BJU	LC	1/13/21	TITLE: FUNCT TRAINER - PWR-SA			
REV	ECO	REVISION DESCRIPTION			BY	CKD	DATE	SHEET 1 OF 2	SCALE: 1:12	DRAWING SIZE: B	PART#: 3020XP-SA

DIMENSIONS ARE IN INCHES
 DIMENSIONS IN [] ARE MILLIMETERS
 BREAK SHARP EDGES .005-.015 [.10-.40]
 MACHINED SURFACE FINISH IS
 63 MICROINCHES [1.6 MICROMETERS]
 DO NOT SCALE DRAWING

DRAWN BY: **BJU** DATE DRAWN: **11/04/20** CHECKED BY: **LC** DATE CHECKED: **1/13/21**

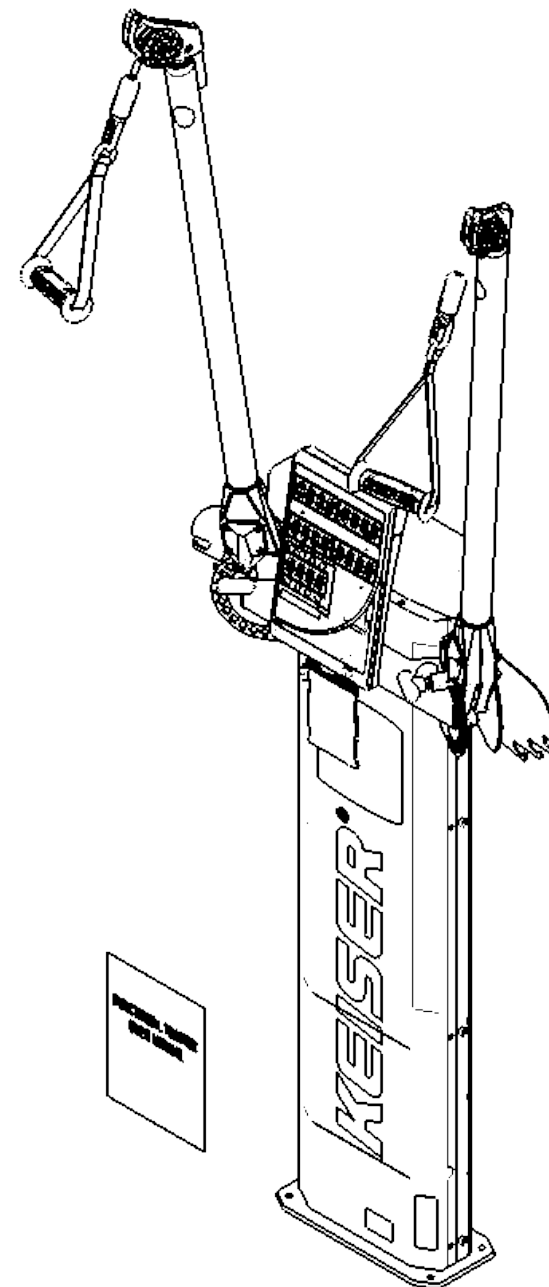
MATERIAL: RAW MAT:

PRINTED ON: 1/15/2021 SW2006 V5.1

X:\drawings\REVISION\30_PULLEY_MACHINES\

ITEM NO.	QTY.	PART NO.	TITLE	ITEM NO.	QTY.	PART NO.	TITLE
1	1	8079	CON - 3/8C X 1/4M	64	2	305007	TUBE - ELBOW-FT
2	1	8085	LUER - MALE-1/8 BARB	65	2	305016	ELBOW - MOLDED-LH
3	4	9014	SCREW - HSSS 8-32 X 1/8 SS	66	2	305017	ELBOW - MOLDED-RH
4	2	9024	RING - RETAINING-EXT-17MM	67	2	305018	HOUSING - L PULLEY-SNGL
5	2	9065	SCREW - SFCHCS 8-32 X 7/8 BLK	68	2	305019	HOUSING - R PULLEY-SNGL
6	8	9096	SCREW - SHCS 1/4-20 X 2 1/2 ZP	69	2	305021	ARM - LOCK
7	2	9097	SCREW - SHCS 10-32 X 1/2 ZP	70	2	305029	CLEVIS - INV CAST
8	2	9098	SCREW - SHCS 1/4-20 X 1/2 ZP	71	1	305060	COVER - TOP-FT
9	1	9127	SCREW - SHSS 1/2 X 1 ZP	72	20	305062	BUSHING - 026067029
10	2	9135	SCREW - SBHCS 5/16-18 X 3/4 ZP	73	1	305064	BUMPER - PULLEY BRKT
11	1	9153	SCREW - HHCS 1/4-20 X 2-1/4 ZP	74	12	305065	PULLEY - 2.500 DIA-MOLDED
12	5	9157	SCREW - HHCS 1/4-20 X 1 GR5 ZP	75	2	305370	DECAL-HANDLE RELEASE
13	2	9161	SCREW - HHCS 1/4-20 X 2-3/4 ZP	76	1	305372	DECAL - ARM ADJ-FT-L
14	1	9163	SCREW - HHCS 1/4-20 X 1 3/4 ZP	77	1	305373	DECAL - ARM ADJ-FT-R
15	2	9164	SCREW - HHCS 1/4-20 X 1-1/2 ZP	78	2	305374	DECAL - WARNING-PINCH-FT
16	2	9200	SCREW - HHCS 3/8-16 X 3/4 ZP	79	1	305375	DECAL - SERIAL NUMBER-FT
17	4	9201	SCREW - HHCS 3/8-16 X 1 ZP	80	2	305411	LINK - HANDLE
18	11	9225	NUT - HELN 1/4-20 ZP	81	4	305417	BALL - 0.750-CRM ST GR 25
19	1	9227	NUT - HRLN 3/8-16 ZP	82	2	305437	BUMPER - CLEVIS
20	1	9231	NUT - HJN 3/4-10 ZP	83	1	305523	MANUAL - USER-FT
21	8	9242	NUT - HEJN 1/4-20 ZP	84	1	305607	DECAL - RH PLATE-PLUNGER ADJ
22	2	9248	NUT - HMSN 6-32 ZP	85	1	305608	DECAL - INF. SERIES-FT & TT
23	8	9252	SCREW - CRPHMS 1/4-20 X 1/4 ZP	86	1	305609	DECAL - LH PLATE-PLUNGER ADJ
24	2	9257	SCREW - CRPHMS 6-32 X 3/8 ZP	87	2	315070	HOLDER - TRANS ROPE GUIDE
25	4	9272	SCREW - CRPHTS-TF #6-32 X 1/2 SS	88	2	555059	KNOB - T-BLACK
26	3	9285	SCREW - CRPHTS 10-24 X 3/4 ZP	89	1	600881	DISPLAY BOX 5 - WIN
27	6	9291	SCREW - CRPHTS 8 X 1/2 ZP	90	1	605060X	DISPLAY BOX - BACK-MODIFIED
28	2	9292	NUT - HEJN 10-32 ZP	91	1	605428	GROUND CLAMP - DISPLAY
29	2	9321	NUT - HEJN 8-32 ZP	92	1	953108	TUBING - 1/4 URETHANE BLK
30	2	9331	SCREW - CRTHMS 10-24 X 3/8	93	1	954212	ROPE - 5MM-POLYESTER
31	2	9338	NUT - 10-24 X 5/8 COMBO HEAD	94	1	955300	STRIP - PROTECTOR-4 INCH
32	2	9341	WASHER-ETLW #10 ZP	95	2	962004	CONNECTOR - 2 MM
33	6	9355	WASHER - FW-ACFT-3/8 SS	96	4	962005	CON - MOD-P-4P-4C
34	2	9357	WASHER - ITLW 1/4 ZP	97	2	962017	CON - MOD-P-6P-6C
35	1	9364	WASHER - ITLW 3/4 ZP	98	1	966701	CABLE - FLAT-4 WIRE 26 GA
36	4	9366	WASHER - ITLW #6 ZP	99	1	966702	WIRE - CABLE-6-26 GA
37	2	9389	WASHER - ITLW 5/16 ZP	100	1	990806	ASSY - PROCESSOR BOX
38	2	9391	WASHER - FW-ACFT 1/4 SS	101	3	990812	KEY - DATA-CS
39	2	110830	ASSY - TB VALVE-DIG	102	2	995001	CAP - GRIP W HOLE
40	1	115000	BUSHING - TANK	103	1	995300	DECAL - TB-PLUS
41	1	115323	FILTER - IN LINE	104	1	995301	DECAL - TB-MINUS
42	1	115333	O-RING - .943 X .737 X .103	105	1	995315	DECAL - L ADJ, R ADJ-POWER
43	5	115423	TIE - 8 IN-PL BLK	106	1	995324	DECAL - MADE IN THE USA
44	1	115429	PLASTIC TIE - 10" RED	107	1	995325	DECAL - MOUNT NOTICE
45	4	135055	STEM BUMPER	108	1	995418	BAG - 4 X 6 X 4MIL-ZIP LOCK
46	1	170891	ASSY - MUFFLER-LONG	109	1	995611	DECAL - KEISER LOGO-4" RED
47	2	172180	PLUNGER	110	1	995615	PLACARD - ENG-POWER-BLK
48	2	175500	SPRING - PLUNGER	111	1	995616	PLACARD - ENG-KEY-RED
49	2	215502	RETAINING RING - 1.70 OD				
50	2	225400	BEARING - 6203ZZ-SHIELDED				
51	1	255318	TANK - 140 CU IN				
52	1	265310	Y CONNECTOR - 1/8 DIA-PL				
53	2	300807	ASSY - HANDLE GRIP				
54	1	300826	CYL & PULLEY BRKT - POWER				
55	1	300925	WELDT - POWER MODULE-FT				
56	1	300930	WELDT - TPL PULLEY BRKT-FT				
57	1	300932	WELDT - DISPLAY MT				
58	1	301701	PLATE - ACC HOOKS-FT-L				
59	1	301702	PLATE - ACC HOOKS-FT-R				
60	2	301830	PLATE - BACK-ADJ ELBOW				
61	1	302057	COVER - BACK-FT				
62	2	302184	SHAFT - COUNTER WT				
63	2	305004	THROAT - JEWEL BLOCK				

3020XP-SA



KEISER[®]

2470 South Cherry Ave. Phone: (559) 256-8000
 Fresno, CA, USA 93706-5004 Fax: (559) 256-8100

THE INFORMATION DISCLOSED HEREIN WAS ORIGINATED BY AND IS THE PROPERTY OF KEISER CORP. AND ALL PATENT, PROPRIETARY, DESIGN, USE, SALE, MANUFACTURING, AND REPRODUCTION RIGHTS THERETO ARE RESERVED BY KEISER CORP.

DIMENSIONS ARE IN INCHES
 DIMENSIONS IN [] ARE MILLIMETERS
 BREAK SHARP EDGES .005-.015 [.10-.40]
 MACHINED SURFACE FINISH IS
 63 MICROINCHES [1.6 MICROMETERS]
 DO NOT SCALE DRAWING

DRAWN BY: BJU	DATE DRAWN: 11/04/20	CHECKED BY: LC	DATE CHECKED: 1/13/21
---------------	----------------------	----------------	-----------------------

MATERIAL:
 RAW MAT:

REV	ECO	RFP	BY	CKD	DATE	TITLE:
A	3810	RFP	BJU	LC	1/13/21	FUNCT TRAINER - PWR-SA
REV	ECO	REVISION DESCRIPTION	BY	CKD	DATE	SHEET 2 OF 2

SCALE: 1:12
 DRAWING SIZE: B
 PART#: 3020XP-SA

X:\drawings\REVISION\30_PULLEY_MACHINES\ PRINTED ON: 1/15/2021 SW2006 V5.1