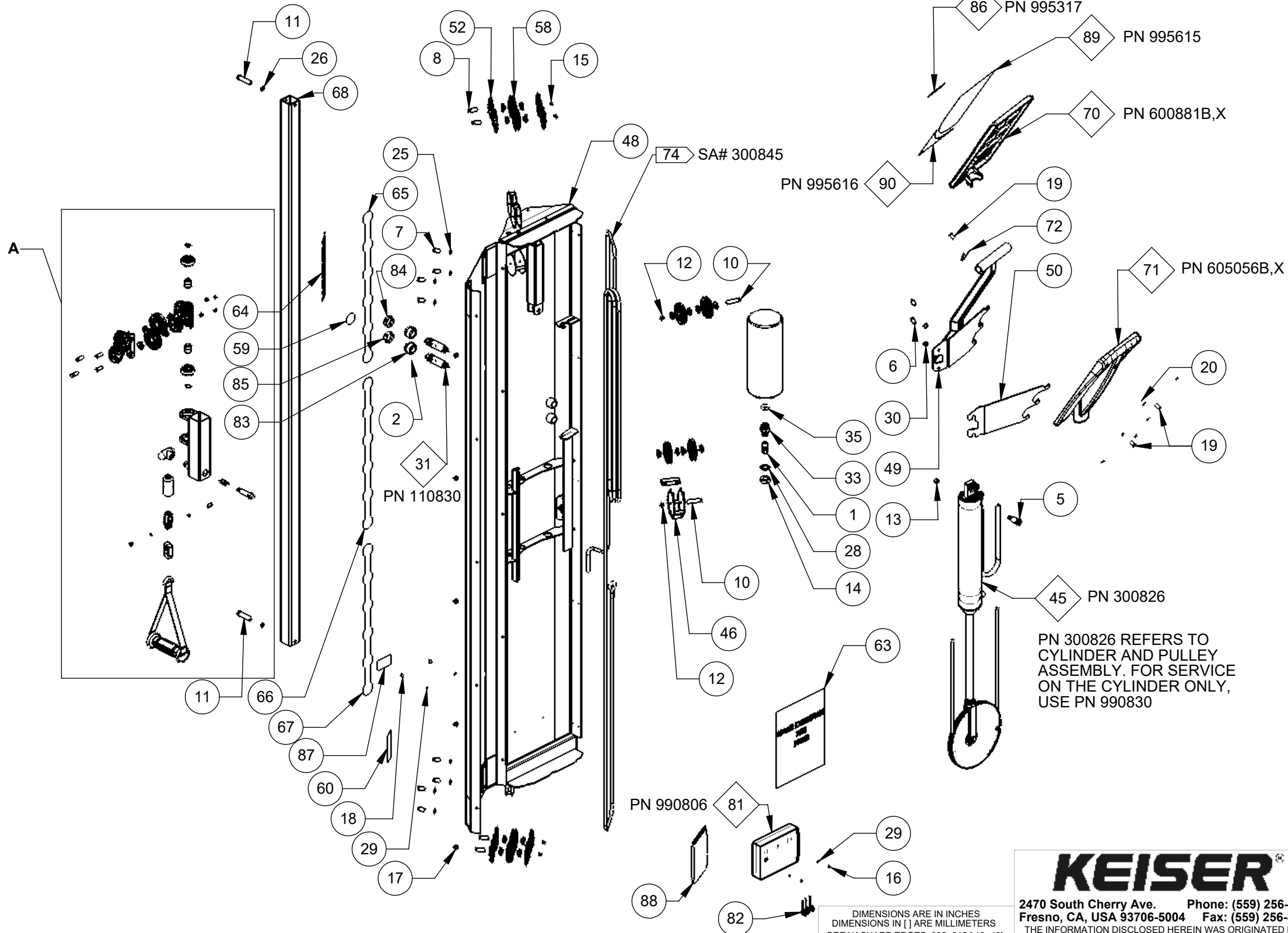
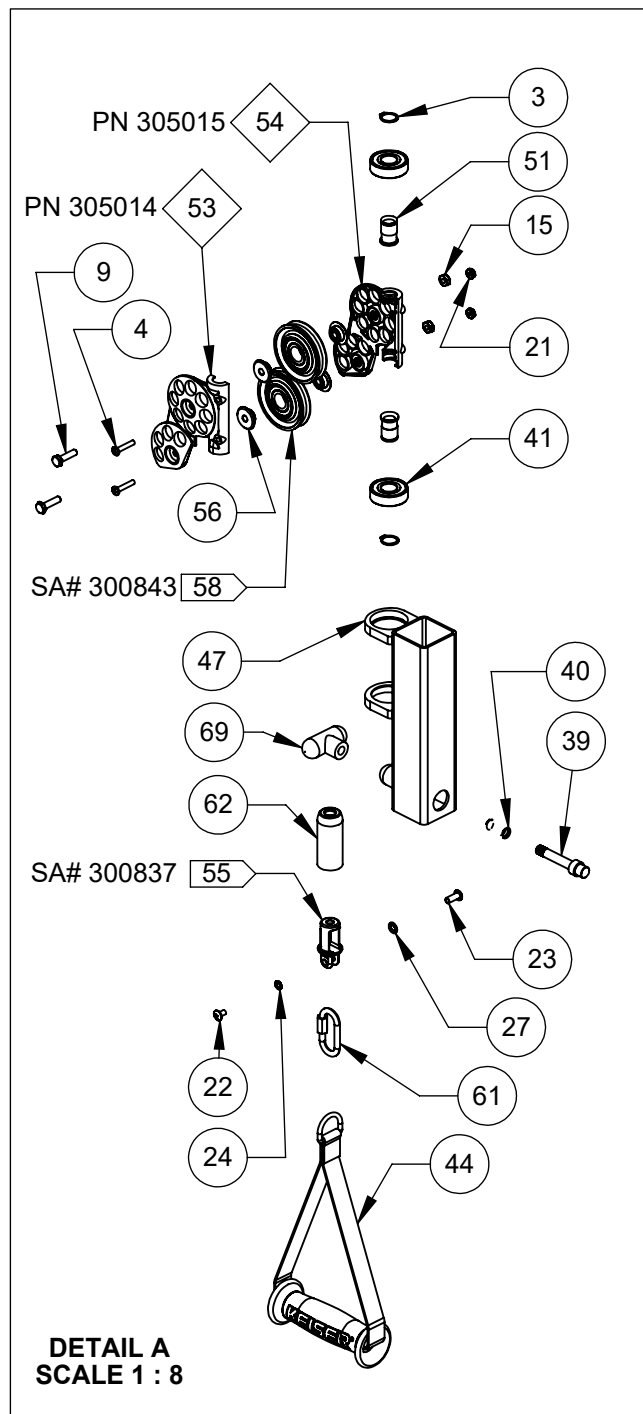


3010XP-SA



COMMONLY SERVICED COMPONENTS

PARTS ASSOCIATED WITH A SERVICE ASSEMBLY

NOTE:

3010XP-SA COVERS THE FOLLOWING MODELS: 3010BP AND 3010XP

A			3810			RFP			BJU			LC			1/13/21			TITLE: PERFORMANCE TRAINER - PWR-SA		
REV			ECO			REVISION DESCRIPTION			BY			CKD			DATE			SHEET 1 OF 2		
															DRAWN BY: BJU			DATE DRAWN: 11/24/20		
															CHECKED BY: LC			DATE CHECKED: 1/13/21		
															MATERIAL: RAW MAT:			DRAWING SIZE: B		
															DIMENSIONS ARE IN INCHES DIMENSIONS IN [] ARE MILLIMETERS BREAK SHARP EDGES .005-.015 [.10-.40] MACHINED SURFACE FINISH IS 63 MICROINCHES [1.6 MICROMETERS] DO NOT SCALE DRAWING			PART#: 3010XP-SA		

KEISER

2470 South Cherry Ave. Phone: (559) 256-8000
 Fresno, CA, USA 93706-5004 Fax: (559) 256-8100

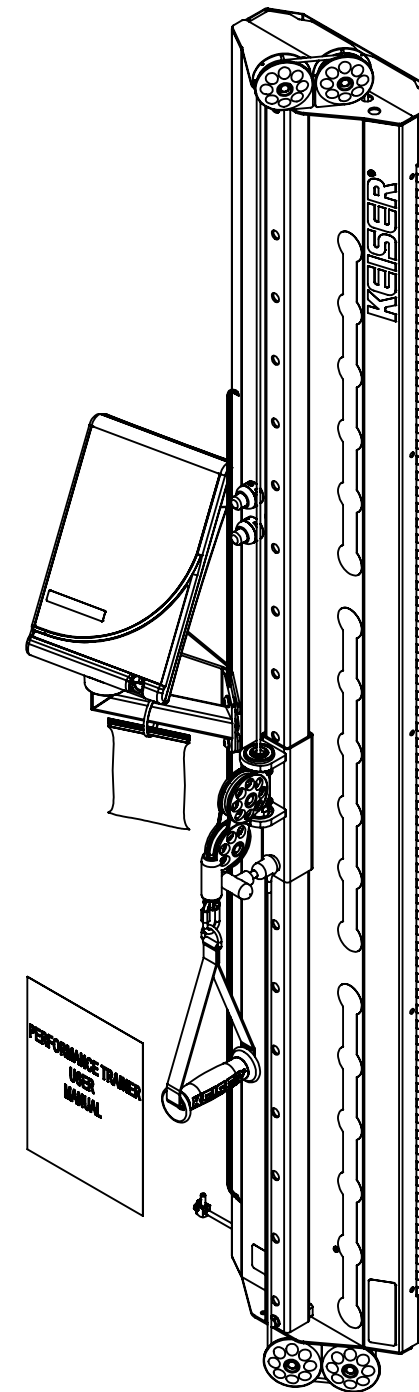
THE INFORMATION DISCLOSED HEREIN WAS ORIGINATED BY AND IS THE PROPERTY OF KEISER CORP. AND ALL PATENT, PROPRIETARY, DESIGN, USE, SALE, MANUFACTURING, AND REPRODUCTION RIGHTS THERE TO ARE RESERVED BY KEISER CORP.

PRINTED ON: 1/15/2021 SW2006 V5.1

X:\drawings\REVISION\30_PULLEY_MACHINES

ITEM NO.	QTY.	PART NO.	TITLE	ITEM NO.	QTY.	PART NO.	TITLE
1	1	8079	CON - 3/8C X 1/4M	64	1	305603	DECAL - KEISER LOGO-1 1/2" RED
2	4	9014	SCREW - HSSS 8-32 X 1/8 SS	65	1	305604	DECAL - VERTICAL ADJ-1-6
3	2	9024	RING - RETAINING-EXT-17MM	66	1	305605	DECAL - VERTICAL ADJ-7-C
4	2	9122	SCREW - CRPHMS 10-32 X 1 ZP	67	1	305606	DECAL - VERTICAL ADJ-E-P
5	1	9127	SCREW - SHSS 1/2 X 1 ZP	68	1	306180	TUBE - ADJ PULLEY-PZ
6	2	9140	SCREW - SBHCS 5/16-18 X 7/8 ZP	69	1	555059	KNOB - T-BLACK
7	8	9151	SCREW - HHCS 1/4-20 X 3/4 ZP	70	1	600881X	DISPLAY BOX - 5 WIN
8	4	9154	SCREW - HHCS 1/4-20 X 1-1/4 ZP	71	1	605056	DISPLAY BOX - BACK
9	2	9157	SCREW - HHCS 1/4-20 X 1 GR5 ZP	72	1	605428	GROUND CLAMP - DISPLAY
10	2	9163	SCREW - HHCS 1/4-20 X 1 3/4 ZP	73	1	953108	TUBING - Ø 1/4 URETHANE BLK
11	2	9205	SCREW - HHCS 3/8-16 X 2 ZP	74	1	954212	ROPE - 5MM POLYESTER/NYLON
12	2	9225	NUT - HELN 1/4-20 ZP	75	2	962004	CON - 2MM-2-S
13	1	9227	NUT - HRLN 3/8-16 ZP	76	4	962005	CON - MOD - P-4P-4C
14	1	9231	NUT - HJN 3/4-10 ZP	77	1	962016	CON - MOD-COUPLER-6-6
15	6	9242	NUT - HEJN 1/4-20 ZP	78	4	962017	CON-MOD-P-6P-6C
16	2	9248	NUT - HMSN 6-32 ZP	79	1	966701	WIRE - CABLE-4-26 GA
17	5	9252	SCREW - CRPHMS 1/4-20 X 1/4 ZP	80	1	966702	WIRE - CABLE-6-26 GA
18	2	9257	SCREW - CRPHMS 6-32 X 3/8 ZP	81	1	990806	ASSY - PROCESSOR BOX
19	3	9285	SCREW - CRPHTS 10-24 X 3/4 ZP	82	3	990812	KEY - DATA-CS
20	6	9291	SCREW - CRPHTS 8 X 1/2 ZP	83	2	995001	CAP - GRIP W HOLE
21	2	9292	NUT - HEJN 10-32 ZP	84	1	995300	DECAL - TB-PLUS
22	1	9331	SCREW - CRTHMS 10-24 X 3/8	85	1	995301	DECAL - TB-MINUS
23	1	9338	NUT - 10-24 X 5/8 COMBO HEAD	86	1	995317	DECAL - VERTICAL ADJ-POWER
24	1	9341	WASHER-ETLW #10 ZP	87	1	995324	DECAL - MADE IN THE USA
25	8	9349	WASHER - FW-SAE-1/4 ZP	88	1	995418	BAG - 4 X 6 X 4MIL-ZIP LOCK
26	2	9355	WASHER - FW-ACFT-3/8 SS	89	1	995615	PLACARD - ENG-POWER-BLK
27	1	9357	WASHER - ITLW 1/4 ZP	90	1	995616	PLACARD - ENG-KEY-RED
28	1	9364	WASHER - ITLW 3/4 ZP				
29	4	9366	WASHER - ITLW #6 ZP				
30	2	9389	WASHER - ITLW 5/16 ZP				
31	2	110830	ASSY - TB VALVE-DIG				
32	1	110897	ASSY - QD-MALE				
33	1	115000	BUSHING - TANK				
34	1	115323	FILTER - IN LINE				
35	1	115333	O-RING - .943 X .737 X .103				
36	14	115423	TIE - 8 IN-PL BLK				
37	2	115429	PLASTIC TIE - 10" RED				
38	1	170891	ASSY - MUFFLER-LONG				
39	1	172180	PLUNGER				
40	1	175500	SPRING - PLUNGER				
41	2	225400	BEARING - 6203ZZ-SHIELDED				
42	1	255318	TANK - 140 CU IN				
43	1	265310	Y CONNECTOR - 1/8 DIA-PL				
44	1	300807	ASSY - HANDLE GRIP				
45	1	300826	CYL & PULLEY BRKT - POWER				
46	1	300917	WELDT - DBL PULLEY BRKT-PZ				
47	1	300918	WELDT - ADJ FAIRLEAD HINGE				
48	1	300929	WELDT - POWER MODULE-PT				
49	1	300931	WELDT - DISPLAY MT-PT				
50	1	301704	PLATE - ACC HOOKS-PT-BACK				
51	2	305004	THROAT - JEWEL BLOCK				
52	8	305012	COVER - PULLEY-2500				
53	1	305014	HOUSING - L PULLEY-DBL				
54	1	305015	HOUSING - R PULLEY-DBL				
55	1	305029	CLEVIS - INV CAST				
56	20	305062	BUSHING - 026067029				
57	1	305064	BUMPER - PULLEY BRKT				
58	10	305065	PULLEY - 2.500 DIA-MOLDED				
59	1	305370	DECAL-WARNING-HANDLE RELEASE				
60	1	305375	DECAL - SERIAL NUMBER-FT				
61	1	305411	LINK - HANDLE				
62	1	305437	BUMPER - CLEVIS				
63	1	305525	MANUAL - USER-PT				

3010XP-SA



PRINTED ON: 1/15/2021 SW2006 V5.1

X:\drawings\REVISION\30_PULLEY_MACHINES\

KEISER

2470 South Cherry Ave. Phone: (559) 256-8000
 Fresno, CA, USA 93706-5004 Fax: (559) 256-8100

THE INFORMATION DISCLOSED HEREIN WAS ORIGINATED BY AND IS THE PROPERTY OF KEISER CORP. AND ALL PATENT, PROPRIETARY, DESIGN, USE, SALE, MANUFACTURING, AND REPRODUCTION RIGHTS THERETO ARE RESERVED BY KEISER CORP.

DIMENSIONS ARE IN INCHES
 DIMENSIONS IN [] ARE MILLIMETERS
 BREAK SHARP EDGES .005-.015 [.10-.40]
 MACHINED SURFACE FINISH IS
 63 MICROINCHES [1.6 MICROMETERS]
 DO NOT SCALE DRAWING

DRAWN BY: BJU	DATE DRAWN: 11/03/20	CHECKED BY: LC	DATE CHECKED: 1/13/21
---------------	----------------------	----------------	-----------------------

MATERIAL:
 RAW MAT:

REV	ECO	RFP	BY	CKD	DATE	TITLE:
A	3810	RFP	BJU	LC	1/13/21	
REV	ECO		BY	CKD	DATE	TITLE:

SHEET 2 OF 2 SCALE: 1:10 DRAWING SIZE: B PART#: 3010XP-SA