

XXX9099

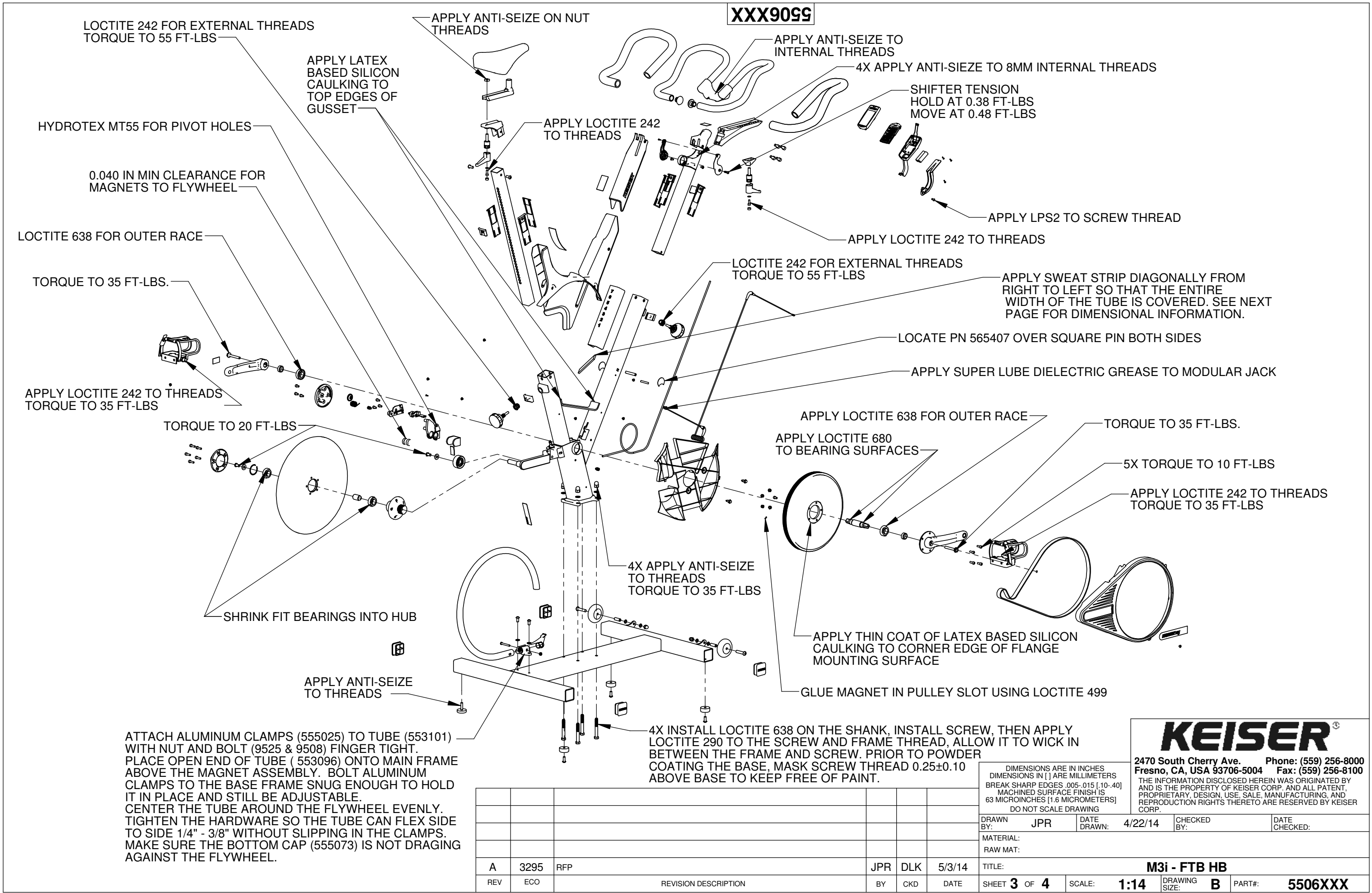
ITEM NO.	QTY.	PART NO.	TITLE	ITEM NO.	QTY.	PART NO.	TITLE	ITEM NO.	QTY.	PART NO.	TITLE
1	1	9062	SCREW - CRFCHMS 10-32 X 1/2 SS	51	1	555005	HUBCAP - FLYWHEEL	101	1	555427	AXLE - BOTTOM BRACKET-HOLLOW
2	7	9253	SCREW - CRPHMS #10-32 X 3/16 SS	52	1	555008	MAGNET COVER	102	2	555428	SCREW - HWHS-M8X1 X 60 CS
3	2	9261	SCREW - CRPHMS 10-32 X 3/8 SS	53	1	555009	SLIDER - SEAT	103	2	555446	WHEEL - 3 IN-W/BUSHING
4	5	9279	SCREW - SBHTS-TF 5/16-18 X 3/4 ZP	54	1	555011	PLATE - MAGNET SUPPORT	104	2	555448	GRIP - HANDLEBAR-NEUTRAL-ADJ
5	1	9287	SCREW - CRPHTS 10-24 X 3/4 SS	55	1	555012	PULLEY - 330MM	105	1	555457	SADDLE - M3X
6	3	9303	SCREW - CRPHTCS-T25 4 X 3/8 SS	56	1	555017	MOUNT - DISPLAY-COMPUTER	106	1	555511	MANUAL - USER-M3
7	1	9304	SCREW - CRFCS-PLASTITE 4-20 X 3/8 SS	57	4	555022	NUT - HAN-HC-7/16-20 SS	107	2	565407	COVER-SQ PIN HOLE
8	2	9344	WASHER - FW-USS 5/16 ZP	58	4	555023	SCREW - HHCS-7/16-20 X 3 SS	108	2	605051	PLUG - GRIP
9	4	9369	WASHER - ACFT 5/16 SS	59	2	555025	CLAMP - WHEEL GUARD	109	2	966502	BATTERY - AA CELL
10	4	9384	WASHER - FW-ACFT 7/16 SS	60	1	555026	BOTTOM SLIDE - HANDLEBAR ADJ	110	3	995418	BAG-4 X 6 X 4MIL-ZIP LOCK
11	2	9391	WASHER - FW-ACFT 1/4 SS	61	1	555031	SPACER - HANDLEBAR ADJ	111	1	995420	BUMPER - MOLDED GLIDE-W-SCREW
12	2	9397	WASHER - BONDED 5/16 SS	62	2	555037	SPACER - 032039114				
13	7	9500	SCREW - SHCS M6x1 X 10 SS	63	1	555039	PIN - MF-5/16 SQ X 2 1/8				
14	6	9501	SCREW - SHCS M6x1 X 16 SS	64	2	555048	PLATE - FRICTION W/HOLE				
15	5	9502	SCREW - SHCS M6x1 X 20 SS	65	1	555049	TUBE - SEAT				
16	1	9508	NUT - HN M6X1 SS	66	1	555051	COVER - BELT-MAIN				
17	4	9509	NUT - HELN M6X1 ZP	67	1	555052	COVER - BELT-INNER				
18	2	9511	SCREW - HHCS M8X1.25 X 16 ZP	68	1	555053	GEAR - POT				
19	2	9516	SCREW - SBHCS M8x1.25 X 45 SS	69	1	555054	SHIFTER - R				
20	2	9519	NUT-HAN-HC M8x1.25 SS	70	1	555055	SHIFTER - L				
21	2	9524	SCREW - SBHCS M8x1.25 X 16 SS	71	2	555058	BUSHING - SHORT				
22	1	9525	SCREW - HHCS M6X1 X 45 SS	72	1	555066	PULLEY - IDLER-MOLDED				
23	1	9532	SCREW-CRPHMS 4-40 X 3/8 SS	73	1	555073	CAP - WHEEL GUARD-BOT				
24	4	9536	SCREW - SHCS M8x1.25 X 16 SS	74	2	555074	HANDLE - L-BLACK				
25	1	9982	NUT-HEAVY SQ. 3/8-16 SS	75	2	555075	HANDLE - STUD-BLACK				
26	3	105423	BUMPER - MOLDED GLIDE	76	2	555076	CAP - M6 SHCS-BLACK				
27	4	115054	PLUG - 2 IN SQ-KEISER	77	1	555077	COVER - LOWER-MAIN FRAME-SHORT				
28	1	215502	RETAINING RING - 1.70 OD	78	1	555078	GUARD - SWEAT-HANDLEBAR-SHORT				
29	1	505063	PIN - HANDLEBAR-1/4 X 1-3/4	79	1	555079	FACE - DISPLAY-COMPUTER-BL				
30	6	505068	BUSHING - 4 PIECE	80	1	555080	COVER - DISPLAY MT				
31	2	505480	RIVET - 1/4 X 3/4 REM PLUG	81	1	555371	DECAL - CAUTION-PEDAL TORQUE				
32	1	540831	PEDAL SET - COMBO	82	1	555372	DECAL - WARNING - RIDING & SLIDER				
33	1	543080	SPACER - BEARING-FLYWHEEL	83	1	555375	DECAL - CAUTION-HANDLEBAR & SEAT				
34	2	543091	HOSE - SPACER-LONG	84	1	555376	DECAL - WARNING-HEART RATE				
35	1	550842	BOXING KIT - M3-FTB HB	85	1	555381	DECAL - SERIAL NUMBER - M3				
36	2	550847	PLUNGER KNOB	86	1	555385	DECAL - DOME-KEISER M3i				
37	1	550855	BACK - DISPLAY-COMPUTER	87	1	555386	DECAL - HANDLEBAR-POSITION-BLK				
38	1	550900	FRAME - MAIN	88	2	555402	BEARING - 6004ZZ-SHIELDED				
39	1	550901	FRAME - BASE	89	1	555403	MAGNET - CYL-3.20 X 9.53 MM GR N45				
40	1	550911	CKT BRD - PICKUP	90	2	555404	MAGNET - 25 X 9.5 MM				
41	1	550917	HANDLEBAR - NEUTRAL-ADJUSTABLE	91	1	555405	SPRING - TORSION				
42	1	550922	SLIDE MT - TUBE	92	1	555406	BELT - POLY V				
43	1	550929	CKT BRD - COMPUTER-BL-BT	93	1	555410	PAD - BRAKE-FRICTION				
44	1	551751	YOKE - MAGNET HOLDER	94	1	555411	SHIFT CABLE				
45	1	553101	TUBE - WHEEL GUARD-270	95	1	555413	CORD - COMP TO PICKUP				
46	1	554500	SUPPORT - MAGNET HOLDER	96	2	555418	BEARING - 6203ZZ-SHIELDED				
47	2	554997	THREADED INSERT - 3/4 X 1/2 SS	97	2	555419	SCREW - HSPPSS-M10x1.5 X 16 BLK				
48	1	555002	GIB - SEAT	98	1	555420	SWEAT STRIP - 5/16 X 3/8				
49	1	555003	FLYWHEEL	99	1	555421	CRANK ARM - L				
50	1	555004	HUB - FLYWHEEL	100	1	555424	CRANK ARM - R				

						DIMENSIONS ARE IN INCHES DIMENSIONS IN [] ARE MILLIMETERS BREAK SHARP EDGES .005-.015 [.10-.40] MACHINED SURFACE FINISH IS 63 MICROINCHES [1.6 MICROMETERS] DO NOT SCALE DRAWING	DRAWN BY: JPR		DATE DRAWN: 4/22/14	CHECKED BY:	DATE CHECKED:	
							MATERIAL:					
							RAW MAT:					
A	3295	RFP		JPR	DLK		5/3/14	TITLE: M3i - FTB HB				
REV	ECO	REVISION DESCRIPTION				BY	CKD	DATE	SHEET 2 OF 4	SCALE: 1:14	DRAWING SIZE: B	PART#: 5506XXX



2470 South Cherry Ave. Phone: (559) 256-8000
Fresno, CA, USA 93706-5004 Fax: (559) 256-8100

THE INFORMATION DISCLOSED HEREIN WAS ORIGINATED BY AND IS THE PROPERTY OF KEISER CORP. AND ALL PATENT, PROPRIETARY, DESIGN, USE, SALE, MANUFACTURING, AND REPRODUCTION RIGHTS THERETO ARE RESERVED BY KEISER CORP.



PRINTED ON: 5/5/2014 SW2006 V5.1

X:\drawings\REVISION\55_EC_RWD_BIKE\

KEISER[®]
2470 South Cherry Ave. Phone: (559) 256-8000
Fresno, CA, USA 93706-5004 Fax: (559) 256-8100

THE INFORMATION DISCLOSED HEREIN WAS ORIGINATED BY AND IS THE PROPERTY OF KEISER CORP. AND ALL PATENT, PROPRIETARY, DESIGN, USE, SALE, MANUFACTURING, AND REPRODUCTION RIGHTS THERETO ARE RESERVED BY KEISER CORP.

DRAWN BY: JPR

DATE DRAWN: 4/22/14

CHECKED BY:

DATE CHECKED:

MATERIAL:

RAW MAT:

TITLE: M3i - FTB HB

SHEET 3 OF 4

SCALE: 1:14

DRAWING SIZE: B

PART#: 5506XXX

A	3295	RFP	JPR	DLK	5/3/14
REV	ECO	REVISION DESCRIPTION	BY	CKD	DATE

DIMENSIONS ARE IN INCHES
DIMENSIONS IN [] ARE MILLIMETERS
BREAK SHARP EDGES .005-.015 [.10-.40]
MACHINED SURFACE FINISH IS
63 MICROINCHES [1.6 MICROMETERS]
DO NOT SCALE DRAWING

